

Conservation Measure 10-05 (2021)
Catch Documentation Scheme for *Dissostichus* spp.

Species	toothfish
Area	all
Season	all
Gear	all

The Commission,

Concerned that illegal, unreported and unregulated (IUU) fishing for *Dissostichus* spp. in the Convention Area threatens serious depletion of populations of *Dissostichus* spp.,

Aware that IUU fishing involves significant by-catch of some Antarctic species, including endangered albatross,

Noting that IUU fishing is inconsistent with the objective of the Convention and undermines the effectiveness of CCAMLR conservation measures,

Underlining the responsibilities of Flag States to ensure that their vessels conduct their fishing activities in a responsible manner,

Mindful of the rights and obligations of Port States to promote the effectiveness of regional fishery conservation measures,

Aware that IUU fishing reflects the high value of, and resulting expansion in markets for and international trade in, *Dissostichus* spp.,

Recalling that Contracting Parties have agreed to introduce classification codes for *Dissostichus* spp. at a national level,

Recognising that the Catch Documentation Scheme for *Dissostichus* spp. (CDS) provides the Commission with important information to assist with achieving the precautionary management objectives of the Convention,

Committed to take steps, consistent with international law, to identify the origins of *Dissostichus* spp. entering the markets of Contracting Parties and to determine whether *Dissostichus* spp. harvested in the Convention Area that is imported into their territories were caught in a manner consistent with CCAMLR conservation measures,

Wishing to reinforce the conservation measures already adopted by the Commission with respect to *Dissostichus* spp.,

Further recognising the importance of enhancing cooperation with non-Contracting Parties to help prevent, deter and eliminate IUU fishing in the Convention Area,

Acknowledging that the Commission has adopted a policy to enhance cooperation between CCAMLR and non-Contracting Parties,

Inviting non-Contracting Parties whose vessels fish for *Dissostichus* spp. to participate in the CDS,

Further noting the importance of providing a mechanism for confiscated *Dissostichus* spp. to be sold or disposed of through the CDS,

hereby adopts the following conservation measure in accordance with Article IX of the Convention:

1. The following definitions are intended only for the purpose of the completion of CDS documents and shall be applied as stated regardless of whether such actions as landings, transshipments, imports, exports or re-exports constitute the same under any CDS participant's relevant domestic law:
 - (i) *Dissostichus* catch document (DCD) is a document, generated by the electronic CDS (e-CDS), containing information relating to the harvest, transshipment and landing of *Dissostichus* spp. as contained in Annex 10-05/A, Attachment 1.

Dissostichus Export Document (DED) is a document, generated by the e-CDS, containing information relating to the export of *Dissostichus* spp. as contained in Annex 10-05/A, Attachment 1.

Dissostichus Re-Export Document (DRED) is a document, generated by the e-CDS, containing information relating to the re-export of *Dissostichus* spp. as contained in Annex 10-05/A, Attachment 1.
 - (ii) CDS Contact Officer is a person appointed by a Contracting Party or non-Contracting Party cooperating with CCAMLR by participating in the CDS, whose details are provided to the CCAMLR Secretariat and who is responsible for:
 - issuing and validating DCDs, DEDs and DREDs;
 - requesting amendments to e-CDS data;
 - providing e-CDS user access to other persons as required.
 - (iii) e-CDS is the web-based application implemented by CCAMLR to support the CDS for the creation, validation and storage of DCDs, DEDs and DREDs.
 - (iv) e-CDS User Manual: The CCAMLR-developed document that describes, *inter alia*, the roles, responsibilities, processes and steps associated with the operation of the e-CDS for the creation, validation and storage of DCDs, DEDs and DREDs.
 - (v) Export: Any movement of *Dissostichus* spp. in any form from territory under the control of the State or free-trade zone of landing, or, where that State or free-trade zone forms part of a customs union, any other member State of that customs union.
 - (vi) Import: The physical entering or bringing of *Dissostichus* spp. in any form into any part of the geographical territory under the control of a State, except where the *Dissostichus* spp. are landed or transhipped within the definitions of 'landing' or 'transshipment' in this conservation measure. *Dissostichus* spp. that has been previously landed and that enters the territory of a State for the sole purpose of in-bond transit to another State, without undergoing any change in quantity or form, does not constitute an import for the purposes of this conservation measure.

- (vii) Landing: The initial unloading or transfer of *Dissostichus* spp. in any form from a vessel to dockside, even if subsequently transferred to another vessel, in a port or free-trade zone where the *Dissostichus* spp. are certified by an authority of the Port State as landed.
 - (viii) Port State: The State that has control over a particular port area or free-trade zone for the purposes of landing, transshipment, importing, exporting and re-exporting and whose authority serves as the authority for landing or transshipment certification.
 - (ix) Re-export: Any movement of *Dissostichus* spp. in any form from territory under the control of a State, free-trade zone, or member State of a customs union of import unless that State, free-trade zone, or any member State of that customs union of import is the first place of import, in which case the movement is an export within the definition of 'export' in this conservation measure.
 - (x) Specially Validated *Dissostichus* Catch Document (SVDCD): A DCD that has been specially issued by a State, or by the Secretariat on behalf of a State, to accompany seized or confiscated *Dissostichus* spp. offered for sale or otherwise disposed of by the State.
 - (xi) Transshipment: The transfer of *Dissostichus* spp. that have not previously been landed, from one vessel directly to another, either at sea or in port. The offload or transfer in port of *Dissostichus* spp. from a vessel to a container is a landing within the definition of 'landing' in this conservation measure.
2. Each Contracting Party and non-Contracting Party cooperating with CCAMLR by participating in the CDS shall take steps to identify the origin of *Dissostichus* spp. landed in, imported into, or exported or re-exported from its territories and determine whether *Dissostichus* spp. harvested in the Convention Area that is landed in, imported into, or exported or re-exported from its territories was caught in a manner consistent with CCAMLR conservation measures.
 3. Each Contracting Party and non-Contracting Party cooperating with CCAMLR by participating in the CDS shall require that each landing of *Dissostichus* spp. at its ports and each transshipment of *Dissostichus* spp. from, or to, its vessels be accompanied by a completed DCD. The landing or transshipment of *Dissostichus* spp. without a DCD is prohibited. The use of the e-CDS to generate, validate and complete a DCD is mandatory.
 4. DCDs must be completed as described in Annex 10-05/A.
 5. A Flag State must be satisfied, through the use of VMS data (as described in Conservation Measure 10-04, paragraph 2) that the FAO area(s) or CCAMLR subarea(s) or division(s) where the *Dissostichus* spp. were taken was accurately reported by the vessel on the DCD, and check the vessel's authorisation to fish before issuing a unique Flag State Confirmation Number on a DCD. The Flag State's CDS Contact Officer shall not issue a Flag State Confirmation Number on a DCD if there is reason to believe that the information submitted by the vessel is inaccurate or that the *Dissostichus* spp. were taken in a manner inconsistent with CCAMLR conservation measures if fishing occurred in the CAMLR Convention Area.

6. Each Contracting Party and non-Contracting Party cooperating with CCAMLR by participating in the CDS shall require that each shipment of *Dissostichus* spp. imported into, or exported or re-exported from its territory be accompanied by a DED or DRED. The import, export or re-export of *Dissostichus* spp. without a DED or DRED is prohibited.
7. DEDs and DREDs must be completed as described in Annex 10-05/A. The use of the e-CDS to generate, validate and complete a DED and/or a DRED is mandatory.
8. When DCDs, DEDs or DREDs need to be provided in hard-copy form, a printout of the document generated by the e-CDS shall be accepted.
9. Each Contracting Party and non-Contracting Party cooperating with CCAMLR by participating in the CDS shall ensure that its customs authorities or other appropriate government officials request and examine the documentation of each shipment of *Dissostichus* spp. imported into, or exported or re-exported from its territory. The examination will confirm that documentation for each shipment includes DED(s) and, where appropriate, DRED(s) that account for all the *Dissostichus* spp. contained in the shipment and verify that the information contained in the DEDs and/or DREDs is consistent with the information contained in the e-CDS. Where necessary, such officials shall also examine the content of any shipment to verify the information contained in the DED(s) and/or DRED(s).
10. If, as a result of an examination referred to in paragraph 9 above or any other inspection or investigation conducted in accordance with relevant domestic law, a question arises regarding the information contained in a DCD, DED or DRED, the exporting State whose government authority validated the document(s) and, as appropriate, the Flag State whose vessel completed the document are called on to cooperate with the importing State with a view to resolving such question.
11. Once created using the e-CDS, all DCDs, DEDs and DREDs will be available to the CCAMLR Secretariat and any Member who has had a role in the completion of the documents, as well as the importing State.
12. Any Contracting Party or non-Contracting Party cooperating with CCAMLR by participating in the CDS may require additional verification, from the relevant CDS Contact Officer, of information contained in DCDs, DEDs or DREDs by using, *inter alia*, VMS, in respect of *Dissostichus* spp.¹ taken outside the Convention Area, when landed at, imported into, or exported or re-exported from its territory.
13. If, following an examination under paragraph 9 or any other inspection or investigation conducted in accordance with relevant domestic law, questions under paragraph 10 or requests for additional verification of documents under paragraph 12 arise, and it is determined, after consultation with the States concerned, that any information contained within a DCD, DED or DRED is invalid or the *Dissostichus* spp. were not harvested in a manner consistent with CCAMLR conservation measures, the import, export or re-export of *Dissostichus* spp. that are the subject of the document(s) is prohibited.
14. If a Contracting Party or non-Contracting Party cooperating with CCAMLR by participating in the CDS has cause to sell or dispose of seized or confiscated *Dissostichus*

spp., it may issue an SVDCD specifying the reasons for that validation. The SVDCD shall include a statement describing the circumstances under which confiscated fish are moving in trade. To the extent practicable, Contracting Parties shall ensure that the sale of seized or confiscated *Dissostichus* spp. does not result in any financial benefit accruing to those responsible for, or benefiting from, the activities that led to the seizure or confiscation of the catch (i.e. including operators, effective beneficiaries, owners, logistics and service providers). If a Contracting Party or non-Contracting Party cooperating with CCAMLR by participating in the CDS issues an SVDCD, it shall immediately report all such validations to the Secretariat for conveying to all Parties and, as appropriate, recording in trade statistics.

15. Where a non-Contracting Party² has cause to sell or dispose of seized or confiscated *Dissostichus* spp., a Contracting Party may request the Secretariat to issue a SVDCD on behalf of that non-Contracting Party. The request shall be accompanied by a statement from the Contracting Party specifying the reasons for requesting the SVDCD. The statement shall include all of the necessary information to enable the Secretariat to complete an SVDCD on behalf of the non-Contracting Party and an explanation of:
- (i) the circumstances in which the *Dissostichus* spp. were seized or confiscated, including details of the vessel from which the *Dissostichus* spp. were seized; or, if *Dissostichus* spp. had been landed when it was seized, the details of the vessel from which the *Dissostichus* spp. were landed, as far as they are known;
 - (ii) the steps taken to ensure that the information to be contained in the SVDCD is accurate and to maintain the effectiveness of the CDS. Such steps shall include, at a minimum:
 - (a) action taken by the Contracting Party to support the non-Contracting Party in monitoring the unload, or in seizing or confiscating the *Dissostichus* spp. if it had already been unloaded, including steps taken to verify the species and catch weights;
 - (b) action taken by the Contracting Party to support efforts by the non-Contracting Party to ensure that the sale of the seized or confiscated *Dissostichus* spp. does not result in any financial benefit accruing to those responsible for, or benefiting from, the activities that led to the seizure or confiscation of the catch (i.e. including operators, effective beneficiaries, owners, logistics and service providers);
 - (c) action taken to seek information from other States that have links to the vessel to ensure that the sale of the seized or confiscated *Dissostichus* spp. does not result in any financial benefit accruing to those responsible for, or benefiting from, the activities that led to the seizure or confiscation of the catch (i.e. including operators, effective beneficiaries, owners, logistics and service providers);
 - (iii) the laws of the non-Contracting Party:
 - (a) under which the product was seized or confiscated, and which would apply to the sale or disposal of the product;

- (b) that may have been breached by the master, crew and any other persons associated with the operations of the vessel from which the *Dissostichus* spp., was seized, confiscated or landed.
- (iv) the action taken, or being taken, by the non-Contracting Party under the laws identified in paragraph (iii):
 - (a) details of the responsible non-Contracting Party authority;
 - (b) whether the responsible non-Contracting Party authority obtained copies of the crew list of the vessel from which the *Dissostichus* spp., was seized, confiscated or landed and of the passports of the master and crew. Copies of these documents shall accompany the statement if they are available, subject to the Contracting Party's domestic law.
- 16. The Contracting Party shall provide additional information to the Secretariat as it becomes available.
- 17. The Secretariat shall, as soon as practicable, circulate to all Contracting Parties the request and information provided under paragraph 15. Contracting Parties shall make any comments or requests for further information, where the information required by paragraph 15 has not been provided, within fourteen (14) days.
- 18. The Contracting Party making the request under paragraph 15 shall provide the further information requested, if available, or the reasons why that information is not available, within fourteen (14) days from any Contracting Party making a request for further information in accordance with paragraph 17.
- 19. If there are no comments on the request in accordance with paragraph 17, or if the Contracting Party making the request under paragraph 15 has responded in accordance with paragraph 18, the Secretariat shall issue an SVDCD if the request contains the information required by paragraph 15.
- 20. Where the Secretariat has issued an SVDCD in accordance with paragraph 15, the Secretariat will, if requested to do so by the Contracting Party on behalf of the non-Contracting Party:
 - (i) generate a DED to accompany a shipment from the territory of the non-Contracting Party of all, or a portion of, the *Dissostichus* spp. subject to the SVDCD;
 - (ii) facilitate temporary access by the non-Contracting Party to the e-CDS to enable the non-Contracting Party to complete the DED.
- 21. Once one SVDCD has been issued in respect of a particular non-Contracting Party under paragraph 15, SCIC shall determine at its next meeting whether a further SVDCD may be issued in respect of that non-Contracting Party without that non-Contracting Party submitting an application to become a non-Contracting Party cooperating with CCAMLR by participating in the CDS.

22. At its annual meeting SCIC shall review all circumstances under which an SVDCD was issued in the period since the last annual meeting, and shall recommend to the Commission any further action that it deems appropriate.
23. A Contracting Party, a non-Contracting Party cooperating with CCAMLR by participating in the CDS, or a non-Contracting Party on whose behalf an SVDCD has been issued by the Secretariat under paragraph 15, may transfer all, or part of, the proceeds from the sale of seized or confiscated *Dissostichus* spp. into the CDS Fund created by the Commission or into a national fund which promotes achievement of the objectives of the Convention. In addition, a Contracting Party, a non-Contracting Party cooperating with CCAMLR by participating in the CDS or a non-Contracting Party on whose behalf an SVDCD has been issued by the Secretariat under paragraph 15, may offer voluntary contributions to support the CDS Fund and its related activities. A Contracting Party or non-Contracting Party cooperating with CCAMLR by participating in the CDS may, consistent with its domestic law, decline to provide a market for toothfish offered for sale with an SVDCD by another State. Provisions concerning the uses of the CDS Fund are found in Annex 10-05/B.
24. Non-Contracting Parties which are involved in the trade of *Dissostichus* spp. are encouraged to cooperate with CCAMLR by participating in the CDS and to approach CCAMLR with requests for assistance in this regard. The procedure regarding cooperation with CCAMLR in the voluntary implementation of the CDS by non-Contracting Parties involved in the trade of *Dissostichus* spp. including, but not limited to, those that have had an SVDCD issued on their behalf, is set out in Annex 10-05/C.

¹ Excluding by-catches of *Dissostichus* spp. by trawlers fishing on the high seas outside the Convention Area. A by-catch shall be defined as no more than 5% of total catch of all species and no more than 50 tonnes for an entire fishing trip by a vessel.

² That is not a non-Contracting Party cooperating with CCAMLR by participating in the CDS.

- A1. Each Contracting Party and non-Contracting Party cooperating with CCAMLR by participating in the CDS shall require that each landing of *Dissostichus* spp. at its ports and each transshipment of *Dissostichus* spp. from or to its vessels be accompanied by a completed DCD created using the e-CDS.
- A2. Each Contracting Party and non-Contracting Party cooperating with CCAMLR by participating in the CDS shall require that each shipment of *Dissostichus* spp. imported into, or exported or re-exported from its territory be accompanied by a DED or DRED created using the e-CDS.
- A3. The use of the e-CDS is described in the e-CDS User Manual that includes, *inter alia*, the roles, responsibilities, processes and steps associated with the operation of the e-CDS for the creation, validation and storage of DCDs, DEDs and DREDs.
- A4. Each DCD, created by the relevant Flag State using the e-CDS, includes a specific identification number (Document Number) consisting of:
 - (i) a four-digit number, consisting of the two-digit International Organization for Standardization (ISO) country code plus the last two digits of the year for which the DCD is issued;
 - (ii) a four-digit sequence number (beginning with 0001) to denote the order in which DCDs are issued;
 - (iii) a single-digit number and / (e.g. /1) following the four-digit sequence number to denote when multiple recipients are recorded for a DCD.
- A5. A DCD must include the following information:
 - (i) the name, address, telephone and fax numbers of the issuing authority;
 - (ii) the name, home port, national registry number and call sign of the vessel and, if issued, its IMO/Lloyd's registration number;
 - (iii) the reference number of the licence or permit, whichever is applicable, if issued;
 - (iv) the net weight of *Dissostichus* spp. landed or transhipped, by species, product type, and
 - (a) by CCAMLR statistical subarea or division if caught in the Convention Area; or
 - (b) by FAO statistical area, subarea or division if caught outside the Convention Area¹;
 - (v) the start date and end date of fishing, and the date of port departure and the date of port entry;
 - (vi) in the case of a transshipment or landing, the name of the master of the fishing vessel, the transshipment port and country/area (or, in the case of an at-sea transshipment,

the at-sea coordinates) and the date of transshipment. In the case of a transshipment within a port, in addition to the above, the name and signature of the port authority. In the case of a landing, the intended landing port and country, the landing date and the certification of landing;

- (vii) in the case of a transshipment and subsequent landing, the name of the master of the receiving vessel, and name, call sign and IMO/Lloyd's number of the receiving vessel (i.e. the vessel to which the catch has been transhipped), the intended landing port and country and the intended date of landing;
 - (viii) in the case of *Dissostichus* spp. sold upon landing, the name, address, telephone and fax numbers of the recipient(s) of the *Dissostichus* spp. to whom the fish was sold and the amount of each species and product type received.
- A6. Each DED and DRED issued by the Export State using the e-CDS shall include the specific identification number (Document Number) of the DCD to which the export relates.
- A7. Each DED and DRED shall include the following information:
- (i) the export code;
 - (ii) the name of the fishing vessel for a DED;
 - (iii) the original export code for a DRED;
 - (iv) the start date and end date of fishing;
 - (v) the net weight of *Dissostichus* spp. exported, by species and product type;
 - (vi) the name and address of the importer of the shipment and the port or place of arrival;
 - (vii) the exporter's name and address;
 - (viii) name/title, government of the Export State and date;
 - (ix) the transport details of the shipment:
 - (1) if by sea
 - (a) container number, AND
 - (b) vessel name, AND
 - (c) bill of lading number, if available²
- AND
- (d) expected date of export and port of departure;

(2) if by air

- (a) flight number, and airway bill number, AND
- (b) expected date of export and place of departure;

(3) if by other means (ground transportation)

- (a) truck registration number and nationality of trucking company, OR
railway transport number, AND

- (b) bill of lading number or other shipment document to identify shipment;

AND

- (c) expected date of export and place of departure.

¹ Report the FAO statistical area/subarea/division where the *Dissostichus* spp. was taken and indicate whether the *Dissostichus* spp. was taken on the high seas or within an EEZ.

² If the bill of lading number is not indicated on the export/re-export document at the time of issuance, it shall be provided to the Secretariat within five working days of receipt by the exporting/re-exporting State.

*This is a preliminary version of the conservation measures—
further checking and verification is to be done by the Secretariat*

10-05

Annex 10-05/A, Attachment 1

Dissostichus Catch Document, *Dissostichus* Export Document, *Dissostichus* Re-export
Document and Specially Validated *Dissostichus* Catch Document
to be used from 1 February 2018

10-05

DISSOSTICHUS CATCH DOCUMENT										10-05	V 1.9
Document number:				Flag State confirmation number:							
1. Issuing authority of document											
			Address:			Telephone:			Fax:		
2. Fishing vessel											
Name:			Home port:			Registration number:		Call sign:		IMO/Lloyd's number (if issued):	
3. Licence number (if issued)			Fishing dates for catch under this document								
			4. From:			5. To:					
			6. Date of port departure:			7. Date of port entry:					
8. Description of fish (landed/transhipped)										9. Description of fish sold	
Species	Type	EEZ	Area caught		Estimated weight to be landed (kg)		Verified weight landed (kg)		Net weight sold (kg)		
10. Description of fish sold											
Name of recipient:											
Address:			Telephone:				Fax:				
11. Landing/Transshipment information: I certify that the above information is complete, true and correct, and that for any <i>Dissostichus</i> spp. taken in the Convention Area, I certify that it was taken in a manner which is consistent with CCAMLR conservation measures.											
Master of fishing vessel or authorised representative: (print in block letters)			Date:		Transshipment port and country or at-sea coordinates:			Transshipment date:			
					Landing port and country:			Landing date:			
12A1. Certificate of transshipment and subsequent landing: I certify that the above information is complete, true and correct to the best of my knowledge.											
Master of receiving vessel:				Vessel name:			Call sign:		IMO/Lloyd's number:		
				Intended landing port and country:			Intended date of landing:				
12B1. Transshipment within a port area (countersignature by Port Authority if appropriate)											
Name:		Authority:					Date:				
13. Certificate of landing: I certify that the above information is complete, true and correct to the best of my knowledge.											
Name:		Authority:			Date:						

*This is a preliminary version of the conservation measures–
further checking and verification is to be done by the Secretariat*

10-05

DISSOSTICHUS EXPORT DOCUMENT		V1.9
Catch Document number:		Export code:
From:	To:	Fishing vessel name:

1. Description of fish exported		
Species	Type	Net weight exported (kg)

2. Transport details – complete one of the four sections below	
Complete this section if transport method is by SEA : Container number: Vessel name: Bill of lading number:	Complete this section if transport method is by ROAD : Truck registration number: Nationality of truck:
Complete this section if transport method is by AIR : Flight number: Airway bill number:	Complete this section if transport method is by RAIL : Railway transport number: Bill of lading number: (or other shipment document number to identify shipment)
Complete the following section regardless of the transport method	
Expected date of export:	Port or place of departure:

3. Exporter certification: I certify that the above information is complete, true and correct to the best of my knowledge.					
Name:	Address:				
	<table border="1" style="width: 100%; border-collapse: collapse;"> <tr> <td style="width: 50%;">Date:</td> <td style="width: 50%;">Export licence:</td> </tr> <tr> <td> </td> <td> </td> </tr> </table>	Date:	Export licence:		
Date:	Export licence:				

4. Import section		
Name of importer:		Importer address:
Port or place of arrival:	State/Province:	Country:

5. Export government authority validation: I certify that the above information is complete, true and correct to the best of my knowledge.		
Name/Title:	Government:	Date of issue:

*This is a preliminary version of the conservation measures–
further checking and verification is to be done by the Secretariat*

10-05

DISSOSTICHUS RE-EXPORT DOCUMENT			V1.9
Catch Document number:		Export code:	
From:	To:	Original export code:	

1. Description of fish exported		
Species	Type	Net weight exported (kg)

2. Transport details – complete one of the four sections below	
Complete this section if transport method is by SEA : Container number: Vessel name: Bill of Lading number:	Complete this section if transport method is by ROAD : Truck registration number: Nationality of truck:
Complete this section if transport method is by AIR : Flight number: Airway bill number:	Complete this section if transport method is by RAIL : Railway transport number: Bill of lading number: (or other shipment document number to identify shipment)
Complete the following section regardless of the transport method	
Expected date of re-export:	Port or place of departure:

3. Exporter certification: I certify that the above information is complete, true and correct to the best of my knowledge.		
Name:	Address:	
	Date:	Export licence:

4. Import section		
Name of importer:	Importer address:	
Port or place of arrival:	State/Province:	Country:

5. Export government authority validation: I certify that the above information is complete, true and correct to the best of my knowledge.		
Name/Title:	Government:	Date of issue:

10-05

SPECIALLY VALIDATED <i>DISSOSTICHUS</i> CATCH DOCUMENT							10-05 V 1.0
Document number:							
1. Issuing authority of document							
Name:		Address:		Telephone:		Fax:	
2. Fishing Vessel							
Name:		Home port:		Registration number:	Call sign:	IMO/Lloyd's number (if issued):	
3. Licence number (if issued)		Fishing dates for catch under this document					
		4. From:			5. To:		
		6. Date of port departure:			7. Date of port entry:		
8. Description of fish (Landed/Transhipped)							9. Description of fish sold
Species	Type	EEZ	Area caught	Estimated weight to be landed (kg)	Verified weight landed (kg)	Net weight sold (kg)	
10. Description of fish sold							
Name of recipient:							
Address:		Telephone:			Fax:		
Reason/s for the sale of seized/confiscated catch recorded on this SVDCD:							
Landing port and country:				Landing date:			
11. Certificate of landing: I certify that the above information is complete, true and correct to the best of my knowledge.							
Name:		Authority:				Date:	

The use of the CDS Fund

- B1. The overall objective of the Catch Documentation Scheme for *Dissostichus* spp. (CDS) Fund ('the Fund') is to provide a mechanism which enables the Commission to enhance its capacity to prevent, deter and eliminate IUU fishing in the Convention Area by, *inter alia*, improving the effectiveness of the CDS.
- B2. The Fund will be operated according to the following provisions:
- (i) The Fund shall be used for special projects, or special needs of the Secretariat if the Commission so decides, aimed at enhancing the Commission's capacity to contribute to the prevention, deterrence and elimination of IUU fishing in the Convention Area. The Fund may also be used for assisting the development and improving the effectiveness of the CDS and for other such purposes as the Commission may decide.
 - (ii) The Fund shall be used primarily for projects conducted by the Secretariat, although the participation of Members in these projects is not precluded. While individual Member projects shall be considered, this shall not replace the normal responsibilities of Members of the Commission. The Fund shall not be used for routine Secretariat activities.
 - (iii) Proposals for special projects may be made by Members, by the Commission or the Scientific Committee and their subsidiary bodies, or by the Secretariat. Proposals shall be submitted to the annual meeting of the Commission as working papers and be accompanied by an explanation of the proposal and an itemised statement of estimated expenditure.
 - (iv) The Commission will, at each annual meeting, designate six Members to serve on a Review Panel to review proposals and to make recommendations to the Commission on whether to fund special projects or special needs. The Review Panel will meet during the first week of the Commission's annual meeting.
 - (v) The Commission shall review all proposals and decide on appropriate projects and funding as a standing agenda item at its annual meeting.
 - (vi) The Fund may be used to assist Acceding States and non-Contracting Parties that wish to cooperate with CCAMLR by contributing to the prevention, deterrence and elimination of IUU fishing in the Convention Area, so long as this use is consistent with provisions (i) and (ii) above. Such assistance shall be provided within the scope of the CCAMLR Cooperation Enhancement Program contained in the Policy to Enhance Cooperation between CCAMLR and non-Contracting Parties. Acceding States and non-Contracting Parties may submit proposals for consideration by the Commission at its annual meeting, if the proposals are sponsored by, or in cooperation with, a Member or the Secretariat.

- (vii) The Financial Regulations of the Commission shall apply to the Fund, except in so far as these provisions provide or the Commission decides otherwise.
- (viii) The Secretariat shall report to the annual meeting of the Commission on the activities of the Fund, including its income and expenditure. Annexed to the report shall be reports on the progress of each project being funded by the Fund, including details of the expenditure on each project. The report will be circulated to Members in advance of the annual meeting.
- (ix) Where an individual Member project is being funded according to provision (ii), that Member shall provide an annual report on the progress of the project, including details of the expenditure on the project. The report shall be submitted to the Secretariat as a working paper to be circulated to Members in advance of the annual meeting. When the project is completed, that Member shall provide a final statement of account certified by an auditor acceptable to the Commission.
- (x) The Commission shall review all ongoing projects at its annual meeting as a standing agenda item and reserves the right, after notice, to cancel a project at any time should it decide that it is necessary. Such a decision shall be exceptional, and shall take into account progress made to date and likely progress in the future, and shall in any case be preceded by an invitation from the Commission to the project coordinator to present a case for continuation of funding.
- (xi) The Commission may modify these provisions at any time.

Annex 10-05/C

**Procedure regarding cooperation with CCAMLR in the implementation of the
CDS by non-Contracting Parties involved in the trade of *Dissostichus* spp.**

- C1. Prior to the annual meeting of the Commission, the Executive Secretary shall contact all non-Contracting Parties which are known to be involved in the trade with *Dissostichus* spp. including, but not limited to, those that have had an SVDCD issued on their behalf, to urge them to become a Contracting Party to CCAMLR or to attain the status of a non-Contracting Party cooperating with CCAMLR by participating in the Catch Documentation Scheme for *Dissostichus* spp. (CDS) in accordance with the provisions of Conservation Measure 10-05. The Executive Secretary shall produce a summary paper for consideration by the Commission. The Executive Secretary shall provide copies of this conservation measure and any related resolutions adopted by the Commission.
- C2. The Executive Secretary shall also establish contact with any non-Contracting Party during the intersessional period, as soon as possible after it was known the non-Contracting Party was engaged in the trade with *Dissostichus* spp. The Executive Secretary shall immediately circulate any written responses to the Members of the Commission.
- C3. The Executive Secretary shall encourage non-Contracting Parties seeking to cooperate with CCAMLR by participating in the CDS to approach the CCAMLR Secretariat with

requests for assistance in that regard. Proposals must demonstrate how any specific assistance requested will help to combat IUU fishing in the Convention Area. Such requests will be considered by the Commission at its annual meeting.

- C4. Any non-Contracting Party interested in cooperating with CCAMLR, as a non-Contracting Party engaged in the trade of *Dissostichus* spp. and participating in the CDS, may, provided such non-Contracting Party prohibits the landing, in its ports, of *Dissostichus* spp. that have not been previously landed in the port of a Contracting Party, or a non-Contracting Party cooperating with CCAMLR by participating in the CDS, apply to the Executive Secretary requesting limited access to the CDS for the purpose of verifying export/re-export documents accompanying imports of *Dissostichus* spp. and issuing re-export documents:
- (i) Any request for limited access to the CDS received by the Executive Secretary after 1 September, shall be considered by the Commission at the annual meeting.
 - (ii) The Executive Secretary shall circulate any request for limited access received before 1 September, along with any supporting materials, to Members via Commission Circular. If after 45 days no objection is received from any Member, the Secretariat shall provide limited access to the CDS to the requesting non-Contracting Party and subsequently notify the Commission.
 - (iii) The Standing Committee for Implementation and Compliance (SCIC) shall be responsible for reviewing the limited access to the CDS granted to each non-Contracting Party under paragraph (i) or (ii) and for recommending to the Commission whether that non-Contracting Party shall retain access. The Commission shall review the limited access to the CDS granted to each non-Contracting Party annually and may revoke this access if the non-Contracting Party has acted in a manner that undermines the effectiveness of the CDS.
- C5. Any non-Contracting Party that seeks to be accorded the status of non-Contracting Party cooperating with CCAMLR by participating in the CDS shall apply to the Executive Secretary requesting such status. Such requests must be received by the Executive Secretary no later than ninety (90) days in advance of an annual meeting of the CAMLR Commission in order to be considered at that meeting.
- C6. An applicant for the status of a non-Contracting Party cooperating with CCAMLR by participating in the CDS shall confirm in writing:
- (i) its commitment to implement Conservation Measure 10-05; and
 - (ii) the measures it has in place to ensure compliance with Conservation Measure 10-05.
- C7. Any non-Contracting Party cooperating with CCAMLR by participating in the CDS shall fulfil the following requirements:
- (i) Information requirements:
 - (a) communicate the data required under the CDS.

- (ii) Compliance requirements:
- (a) implement all the provisions of Conservation Measure 10-05;
 - (b) inform CCAMLR of all the measures taken to ensure compliance by its vessels used for the transshipments of *Dissostichus* spp. and its operators, including, *inter alia*, and as appropriate, inspection at sea and in port, CDS implementation;
 - (c) respond to alleged violations of CCAMLR measures by its vessels transshipping *Dissostichus* spp. and its operators, as determined by the appropriate bodies, and communicate to CCAMLR the actions taken against operators.
- C8. SCIC shall be responsible for reviewing requests for the status of non-Contracting Party cooperating with CCAMLR by participating in the CDS and for recommending to the Commission whether the applicants should be granted such status.
- C9. Annually the Commission shall review the cooperating status granted to each non-Contracting Party. The Commission may revoke such status if the non-Contracting Party concerned has not complied with the criteria for retaining such status established by this measure.
- C10. Contracting Parties engaged in the trade of toothfish with non-Contracting Parties are encouraged to assist in capacity building and promote the voluntary implementation of the CDS.
- C11. Contracting Parties shall report to the Secretariat 45 days before the annual meeting on efforts undertaken pursuant to paragraph C10. The Secretariat shall include a summary of these efforts in an annual report to SCIC concerning the effectiveness of the non-Contracting Party Engagement Strategy.

Conservation Measure 24-05 (2021)

**Fishing for research purposes pursuant to Conservation
Measure 24-01**

Species	all
Area	all
Season	2021/22
Gear	all

The Commission,

Desiring to increase clarity, traceability and transparency related to the details of fishing for research purposes,

Welcoming the work of the Commission towards simplifying and harmonising the regulatory framework governing CCAMLR fisheries,

Recognising the need to increase both transparency and documentation in relation to fishing for research purposes that has been authorised by the Commission,

hereby adopts the following conservation measure in accordance with Conservation Measure 24-01, paragraph 3(d):

1. For the 2021/22 season, the following research activities authorised each season pursuant to Conservation Measure 24-01, paragraph 3, or current multi-year research activities previously approved by the Commission, shall be conducted in accordance with the Research Plans endorsed by the Commission and the requirements of Conservation Measure 24-01 and this conservation measure (Table 1).
2. Unless otherwise specified in Conservation Measure 24-01 or column (e) of the table in paragraph 1 above, all relevant CCAMLR conservation measures apply to activities carried out under this conservation measure, including requirements related to mesh size, gear type, closed areas, size limits, incidental mortality, environmental protection, by-catch, compliance and data reporting.

Season

3. For the purposes of the definition of a season in this conservation measure, Conservation Measure 32-01 applies.

*This is a preliminary version of the conservation measures–
further checking and verification is to be done by the Secretariat*

Table 1: Research activities pursuant to Conservation Measure 24-01, paragraph 3, in 2021/22.

(a) Area/ subarea/ division	(b) Member(s)	(c) Target species or taxa	(d) Catch limit ¹ (tonnes) or effort limit (sets/hauls)	(e) Specific conservation measure exemptions necessary for research	(f) Scientific Committee paragraphs
88.1	New Zealand	<i>Dissostichus mawsoni</i>	65 tonnes/(55 bottom sets and 10 vertical sets)	CM 31-02	SC-CAMLR-40, paragraph 3.91
88.3	Ukraine, Korea, Republic of	<i>Dissostichus mawsoni</i>	254 tonnes	CM 32-02	SC-CAMLR-40, paragraph 3.107, Tables 3 and 4

¹ If multiple Members are involved in a Research Plan, they will indicate the intended distribution of the catch limit, where specified, between them.

Conservation Measure 25-03 (2021)¹
**Minimisation of the incidental mortality of seabirds
and marine mammals in the course of trawl fishing
in the Convention Area**

Species	seabirds, marine mammals
Area	all
Season	all
Gear	trawl

The Commission,

Noting the need to reduce the incidental mortality of, or injury to, seabirds and marine mammals from fishing operations,

Adopts the following measures to reduce the incidental mortality of, or injury to, seabirds and marine mammals during trawl fishing.

1. The use of net monitor cables on vessels in the CAMLR Convention Area is prohibited².
2. Vessels operating within the Convention Area should at all times arrange the location and level of lighting so as to minimise illumination directed out from the vessel, consistent with the safe operation of the vessel.
3. The discharge of offal^{3,4} and discards⁵ shall be prohibited during the shooting and hauling of trawl gear.
4. Nets shall be cleaned prior to shooting to remove items that might attract birds.
5. Vessels should adopt shooting and hauling procedures that minimise the time that the net is lying on the surface of the water with the meshes slack. Net maintenance should, to the extent possible, not be carried out with the net in the water.
6. Vessels should be encouraged to develop gear configurations that will minimise the chance of birds encountering the parts of the net to which they are most vulnerable. This could include increasing the weighting or decreasing the buoyancy of the net so that it sinks faster, or placing coloured streamers or other devices over particular areas of the net where the mesh sizes create a particular danger to birds.

¹ Except for waters adjacent to the Kerguelen and Crozet Islands

² Net monitoring cables may be used on vessels using continuous trawling methods during the 2021/22 fishing season provided all vessels using net monitoring cables follow the specifications of a trial of mitigation devices outlined in Annex 25-03/A. This exemption will be reviewed at CCAMLR-41 following further advice from the Scientific Committee.

³ 'Offal' is defined as bait and by-products from the processing of fish and other organisms, including parts or sections of fish or organisms which are by-products of processing.

⁴ 'Stick water' is a liquid discharge produced as a by-product of processing of krill and fish. As stick water does not contain a source of food for birds, it is not considered as offal (see footnote 3).

⁵ For the purpose of this conservation measure, 'discards' are defined as whole fish or other organisms, except elasmobranchs and invertebrates where the vessel is fishing north of 60°S, returned to the sea dead or with low expectation of survival, as described in the Observer Longline Logbook 'Observed Haul Catch' form instructions.

Specifications for the trial of mitigation devices

Specifications for the trial of mitigation devices required for all vessels using net monitoring cables are as follows:

- (i) the observer(s) shall conduct observations on incidental mortality on the net monitoring cable, trawl warp and mitigation device(s) at least twice daily while fishing, following the current standard warp strike observer protocols outlined in the Scheme of International Scientific Observation (SISO) krill logbook instructions (SC-CAMLR-38, paragraph 5.14) and methods outlined in WG-FSA-2021/14;
- (ii) the use of a camera or video monitoring system (able to operate in low light conditions) that continuously records the full aerial length of the net monitoring cable and the seaward entry point during fishing operations (SC-CAMLR-38, paragraph 5.14);
- (iii) all camera or video footage shall be retained for two years unless otherwise directed by the Scientific Committee;
- (iv) observation rates of strikes on the net monitoring cables and warps must reach equivalent levels to those achieved in 2021 (SC-CAMLR-40, paragraph 3.143):
 - (a) with every vessel participating in the trial achieving on-vessel observation coverage of at least 5% of total active fishing time;
 - (b) with, when a Member has one vessel participating in the trial for the first time, on-vessel observation coverage of at least 10% of the total active fishing time for a two-month period between April and June 2022;
 - (c) with, when a Member has two or more vessels participating in the trial, onshore observation of camera or video footage to increase observation coverage to at least 20% of the total active fishing time for a two-month period between April and June 2022 on two vessels, and, if possible, with one vessel representing stern trawlers and one vessel representing side trawlers for any Member including two vessels in the trial. Additionally, each additional vessel shall achieve on-vessel observation coverage of at least 10% for a two-month period between April and June 2022;
- (v) mandatory mitigation limiting seabird access to the area where warp cables and net monitoring cables are deployed (i.e. the mitigation device(s) should surround the area containing the warp and net monitoring cables) to enable the evaluation of further improvements to seabird strike mitigation options and consideration by the Working Group on Incidental Mortality Associated with Fishing (WG-IMAF) (SC-CAMLR-40, paragraphs 3.130 and 3.143).

Reporting requirements for all vessels using net monitoring cables are as follows:

- (i) all Members with vessels using net monitoring cables shall provide a detailed preliminary report of the 2022 trial to the 2022 meeting of WG-IMAF or WG-FSA-2022 if WG-IMAF was convened before August, and a complete report to the meeting of WG-IMAF in 2023 which should include findings from both the on-vessel and onshore observers;
- (ii) final reports from trials conducted in the 2020/21 fishing season should be submitted to WG-IMAF in 2022;
- (iii) this trial should compare different mitigation options for practicality and effectiveness in mitigating bird strikes on warps and net monitoring cables in continuous trawling operations.

*This is a preliminary version of the conservation measures–
further checking and verification is to be done by the Secretariat*

32-09

Conservation Measure 32-09 (2021)

**Prohibition of directed fishing for *Dissostichus* spp. except
in accordance with specific conservation measures
in the 2021/22 season**

Species	toothfish
Area	48.5
Season	2021/22
Gear	all

The Commission hereby adopts the following conservation measure in accordance with Article IX of the Convention:

Directed fishing for *Dissostichus* spp. in Statistical Subarea 48.5 is prohibited from 1 December 2021 to 30 November 2022.

PRELIMINARY

Conservation Measure 33-02 (2021)

**Limitation of by-catch in Statistical Division 58.5.2
in the 2021/22 season**

Species	by-catch
Area	58.5.2
Season	2021/22
Gear	all

1. There shall be no directed fishing for any species other than *Dissostichus eleginoides* and *Champsocephalus gunnari* in Statistical Division 58.5.2 in the 2021/22 fishing season.
2. In directed fisheries in Statistical Division 58.5.2 in the 2021/22 season, the by-catch of *Channichthys rhinocerus* shall not exceed 1 663 tonnes, the by-catch of *Lepidonotothen squamifrons* shall not exceed 80 tonnes, the by-catch of *Macrourus caml* and *Macrourus whitsoni* combined shall not exceed 409 tonnes, the by-catch of *Macrourus holotrachys* and *Macrourus carinatus* combined shall not exceed 360 tonnes, and the by-catch of skates and rays shall not exceed 120 tonnes. For the purposes of this measure ‘skates and rays’ should be counted as a single species.
3. The by-catch of any fish species not mentioned in paragraph 2, and for which there is no other catch limit in force, shall not exceed 50 tonnes in Statistical Division 58.5.2.
4. If, in the course of a directed fishery, the by-catch in any one haul¹ is equal to, or greater than, 5 tonnes for *Channichthys rhinocerus*, 3 tonnes for all *Macrourus* spp. combined, or 2 tonnes for *Lepidonotothen squamifrons*, or 2 tonnes of *Somniosus* spp., or 2 tonnes of skates and rays, then the fishing vessel shall not fish using that method of fishing at any point within 5 n miles² of the location where the by-catch limit is exceeded for a period of at least five days³. The location where the by-catch limit is exceeded is defined as the path⁴ followed by the fishing vessel.
5. If, in the course of a directed fishery, the by-catch in any one haul¹ of any other by-catch species for which by-catch limitations apply under this conservation measure is equal to, or greater than, 1 tonne, then the fishing vessel shall not fish using that method of fishing at any point within 5 n miles² of the location where the by-catch exceeded 1 tonne for a period of at least five days³. The location where the by-catch exceeded 1 tonne is defined as the path⁴ followed by the fishing vessel.

¹ For the purposes of this conservation measure, for a longline, each haul applies to a single longline regardless of how contiguous sections of gear are connected.

² This provision concerning the minimum distance separating fishing locations is adopted pending the adoption of a more appropriate definition of a fishing location by the Commission.

³ The specified period is adopted in accordance with the reporting period specified in Conservation Measure 23-01, pending the adoption of a more appropriate period by the Commission.

⁴ For a trawl, the path is defined from the point at which the fishing gear was first deployed from the fishing vessel to the point at which the fishing gear was retrieved by the fishing vessel. For a longline or a pot line, the path is defined from the point at which the first anchor of a set was deployed to the point at which the last anchor of that set was deployed.

Conservation Measure 33-03 (2021)^{1,2}

**Limitation of by-catch in new and exploratory fisheries
in the 2021/22 season**

Species	by-catch
Area	various
Season	2021/22
Gear	all

1. This conservation measure applies to new and exploratory fisheries in the 2021/22 season, except where specific by-catch limits apply. Directed fishing shall not take place in the 2021/22 season in Statistical Divisions 58.4.1 and 58.4.3a.
2. The catch limits for all by-catch are set out in Annex 33-03/A. Within these catch limits, the total catch³ of by-catch, excluding individuals released alive in any small-scale research unit (SSRU), group of SSRUs or research block for which a specific catch limit (including a zero catch limit) is in place as defined in relevant conservation measures, shall not exceed the following limits:
 - skates and rays: 5% of the catch limit of *Dissostichus* spp.
 - *Macrourus* spp.: 16% of the catch limit for *Dissostichus* spp.
 - all other species 16% of the catch limit for *Dissostichus* spp.
3. For the purposes of this measure ‘*Macrourus* spp.’ and ‘skates and rays’ should each be counted as a single species.
4. On all vessels, all skates and rays must be brought on board or alongside the vessel to be checked for tags and for their condition to be assessed. Recaptured tagged skates and rays, as per Conservation Measure 41-01, Annex 41-01/C, paragraphs 2(vii) and (ix), should not be re-released. Unless otherwise specified by scientific observers, all other skates and rays caught alive and with a high probability of survival should be released alive, by vessels, by cutting snoods, and when practical, removing the hooks, and the number should be recorded and reported to the Secretariat.
5. If the by-catch of any one species is equal to, or greater than, 1 tonne in any one haul or set⁴, then the fishing vessel shall move to another location at least 5 n miles⁵ distant. The fishing vessel shall not return to any point within 5 n miles of the location where the by-catch exceeded 1 tonne for a period of at least five days⁶. The location where the by-catch exceeded 1 tonne is defined as the path⁷ followed by the fishing vessel.
6. If the catch of *Macrourus* spp. taken by a single vessel in any two 10-day periods⁸ in any SSRU, group of SSRUs or research block for which a specific catch limit (including a zero catch limit) is in place exceeds 1 500 kg in each 10-day period and exceeds 16% of the catch of *Dissostichus* spp. by that vessel in that SSRU, group of SSRUs or research block for which a specific catch limit (including a zero catch limit) is in place in those periods, the vessel shall cease fishing in that SSRU, group of SSRUs or research block for which a specific catch limit (including a zero catch limit) is in place for the remainder of the season.

¹ Except for waters adjacent to the Kerguelen and Crozet Islands

² Except for waters adjacent to the Prince Edward Islands

³ Total green weight caught, excluding individuals released alive.

⁴ For the purposes of this conservation measure, for a longline, each haul applies to a single longline regardless of how contiguous sections of gear are connected.

⁵ This provision concerning the minimum distance separating fishing locations is adopted pending the adoption of a more appropriate definition of a fishing location by the Commission.

- ⁶ The specified period is adopted in accordance with the reporting period specified in Conservation Measure 23-01, pending the adoption of a more appropriate period by the Commission.
- ⁷ For a trawl, the path is defined from the point at which the fishing gear was first deployed from the fishing vessel to the point at which the fishing gear was retrieved by the fishing vessel. For a longline, the path is defined from the point at which the first anchor of a set was deployed to the point at which the last anchor of that set was deployed.
- ⁸ A 10-day period is defined as day 1 to day 10, day 11 to day 20, or day 21 to the last day of the month.

Annex 33-03/A

Table 1: By-catch catch limits for new and exploratory fisheries in 2021/22.

Subarea/ division	Research block	<i>Dissostichus</i> spp. catch limit (tonnes)	By-catch catch limit		
			Skates and rays (tonnes)	<i>Macrourus</i> spp. (tonnes)	Other species (tonnes)
48.6	486_2	134	6	21	21
48.6	486_3	36	1	5	5
48.6	486_4	196	9	31	31
48.6	486_5	210	10	33	33
58.4.1	5841_1	138	7	22	22
58.4.1	5841_2	139	7	22	22
58.4.1	5841_3	119	6	19	19
58.4.1	5841_4	23	1	4	4
58.4.1	5841_5	60	3	10	10
58.4.1	5841_6	104	5	17	17
58.4.2	5842_1	72	3	11	11
58.4.2	5842_2	55	2	8	8
58.4.3a	5843a_1	19	1	3	3
88.2	882_1	230	11	36	36
88.2	882_2	223	11	35	35
88.2	882_3	204	10	32	32
88.2	882_4	154	7	24	24
88.2	SSRU H	102	5	16	16

Conservation Measure 41-01 (2021)^{1,2}

**General measures for exploratory fisheries for *Dissostichus* spp.
in the Convention Area in the 2021/22 season**

Species	toothfish
Area	various
Season	2021/22
Gear	longline, trawl

The Commission hereby adopts the following conservation measure:

1. This conservation measure applies to exploratory fisheries using the trawl or longline methods, except for such fisheries where the Commission has given specific exemptions to the extent of those exemptions. In trawl fisheries, a haul comprises a single deployment of the trawl net. In longline fisheries, a haul comprises the setting of one or more lines in a single location.
2. Fishing should take place over as large a geographical and bathymetric range as possible to obtain the information necessary to determine fishery potential and to avoid over-concentration of catch and effort. To this end, fishing in any small-scale research unit (SSRU) shall cease when the reported catch reaches the specified catch limit and that SSRU shall be closed to fishing for the remainder of the season.
3. In order to give effect to paragraph 2, above:
 - (i) the precise geographic position of a haul in trawl fisheries will be determined by the midpoint of the path between the start point and end point of the haul for the purposes of catch and effort reporting;
 - (ii) the precise geographic position of a haul/set in longline fisheries will be determined by the centre point of the line or lines deployed for the purposes of catch and effort reporting;
 - (iii) the vessel will be deemed to be fishing in any SSRU from the beginning of the setting process until the completion of the hauling of all lines;
 - (iv) catch and effort information for each species by SSRU shall be reported to the Executive Secretary each day using the Daily Catch and Effort Reporting System set out in Conservation Measure 23-07;
 - (v) the Secretariat shall notify Contracting Parties participating in these fisheries when the total catch for *Dissostichus eleginoides* and *Dissostichus mawsoni* combined in any SSRU is likely to reach the specified catch limit, and of the closure of that SSRU when that limit is reached³. No part of a trawl path may lie within a closed SSRU and no part of a longline may be set within a closed SSRU.
4. The by-catch in each exploratory fishery shall be regulated as in Conservation Measure 33-03.
5. The total number and weight of *Dissostichus eleginoides* and *Dissostichus mawsoni* discarded, including those with the 'jellymeat' condition, shall be reported.
6. Each vessel participating in the exploratory fisheries for *Dissostichus* spp. during the 2021/22 season shall have one scientific observer appointed in accordance with the

CCAMLR Scheme of International Scientific Observation and, where possible, one additional scientific observer, on board throughout all fishing activities within the fishing season.

7. The Data Collection Plan (Annex 41-01/A), Research Plan (Annex 41-01/B) and Tagging Program (Annex 41-01/C) shall be implemented. Data collected pursuant to the Data Collection and Research Plans for the period up to 31 August 2022 shall be reported to CCAMLR by 30 September 2022 so that the data will be available to the meeting of the Working Group on Fish Stock Assessment (WG-FSA) in 2022. Such data taken after 31 August 2022 shall be reported to CCAMLR not later than three months after the closure of the fishery, but, where possible, submitted in time for the consideration of WG-FSA.
8. Members who choose not to participate in the fishery prior to the commencement of the fishery shall inform the Secretariat of changes in their plans no later than one month before the start of the fishery. If, for whatever reason, Members are unable to participate in the fishery, they shall inform the Secretariat no later than one week after finding that they cannot participate. The Secretariat will inform all Contracting Parties immediately after such notification is received.

¹ Except for waters adjacent to the Kerguelen and Crozet Islands

² Except for waters adjacent to the Prince Edward Islands

³ The closure of fisheries is governed by Conservation Measure 31-02.

Annex 41-01/A

Data Collection Plan for exploratory fisheries

1. All vessels will comply with the Daily Catch and Effort Reporting Systems (Conservation Measure 23-07) and Monthly Fine-scale Catch, Effort and Biological Data Reporting Systems (Conservation Measures 23-04 and 23-05).
2. The vessel shall ensure that sufficient samples are made available to the on-board observers to enable collection of all data required by the [*Observer Sampling Requirements*](#)¹ and those specified for the current season, and as described in the [*Scientific Observer's Manual – Finfish Fisheries*](#)¹.
3. Data specific to longline fisheries will be collected. These include:
 - (i) position and sea depth at each end of every line in a haul;
 - (ii) setting, soak and hauling times;
 - (iii) number and species of fish lost at surface;
 - (iv) number of hooks set;
 - (v) bait type;
 - (vi) baiting success (%);
 - (vii) hook type.

¹ Available from the CCAMLR website.

Research Plan for exploratory fisheries

1. Activities under this Research Plan shall not be exempted from any conservation measure in force.
2. This plan applies to all small-scale research units (SSRUs) as defined in Table 1 and Figure 1.
3. Except when fishing in Statistical Subareas 88.1 and 88.2, any vessel must operate in accordance with the research activities agreed by the Scientific Committee for 2021/22. Only research hauls shall be deployed during these activities¹.
4. To be designated as a research haul:
 - (i) each research haul must be separated² by not less than 3 n miles from any other research haul, distance to be measured from the geographical midpoint of each research haul;
 - (ii) each haul shall comprise: for longlines, at least 3 500 hooks and no more than 5 000 hooks; this may comprise a number of separate lines set in the same location; for trawls, at least 30 minutes effective fishing time as defined in the [*Draft Manual for Bottom Trawl Surveys in the Convention Area*](#)³ (SC-CAMLR-XI, Annex 5, Appendix H, Attachment E, paragraph 4);
 - (iii) each haul of a longline shall have a soak time of not less than six hours, measured from the time of completion of the setting process to the beginning of the hauling process.
5. In the exploratory fisheries, all data specified in the Data Collection Plan (Annex 41-01/A) of this conservation measure shall be collected for every haul.
6. The vessel shall ensure that the observer has access to sufficient samples to enable collection of all data required by the [*Observer Sampling Requirements*](#)³ and those specified in the Data Collection Plan (Annex 41-01/A) for the current season, and as described in the [*Scientific Observer's Manual – Finfish Fisheries*](#)³.

¹ Vessels shall prioritise conducting research sets within the designated research blocks. However, in research blocks where access is reduced due to sea-ice, the following procedure shall be applied:

- (i) in the event that a vessel attempts research fishing in a research block and finds that insufficient area is accessible to conduct research sets, the vessel shall notify the Secretariat, and may attempt to set research sets in a buffer zone up to one fine-scale rectangle wide around the research block, or move to another research block;
- (ii) if this buffer zone is also inaccessible due to sea-ice, the vessel shall notify the Secretariat, and then the vessel may attempt to set research lines in an extended buffer zone up to two fine-scale rectangles wide around the research block, or move to another research block;
- (iii) if, during the course of fishing in the buffer zone or the extended buffer zone, sea-ice conditions change such that sufficient area to conduct research sets in the original research block become accessible, then the vessel shall prioritise further research hauls within the original research block;
- (iv) if the research block, buffer zone and/or extended buffer zone are all inaccessible, the vessel may move to any other designated research block where the catch limit has not been reached.

² In the research activities conducted in 2021/22, 50% of research lines could be set with less than 3 n miles separation.

³ Available from the CCAMLR website.

*This is a preliminary version of the conservation measures–
further checking and verification is to be done by the Secretariat*

Table 1: Description of small-scale research units (SSRUs) (see also Figure 1).

SSRU	Boundary line
486A	From 50°S 20°W, due east to 1°30'E, due south to 60°S, due west to 20°W, due north to 50°S.
486B	From 60°S 20°W, due east to 10°W, due south to coast, westward along coast to 20°W, due north to 60°S.
486C	From 60°S 10°W, due east to 0° longitude, due south to coast, westward along coast to 10°W, due north to 60°S.
486D	From 60°S 0° longitude, due east to 10°E, due south to coast, westward along coast to 0° longitude, due north to 60°S.
486E	From 60°S 10°E, due east to 20°E, due south to coast, westward along coast to 10°E, due north to 60°S.
486F	From 60°S 20°E, due east to 30°E, due south to coast, westward along coast to 20°E, due north to 60°S.
486G	From 50°S 1°30'E, due east to 30°E, due south to 60°S, due west to 1°30'E, due north to 50°S.
5841A	From 55°S 86°E, due east to 150°E, due south to 60°S, due west to 86°E, due north to 55°S.
5841B	From 60°S 86°E, due east to 90°E, due south to coast, westward along coast to 80°E, due north to 64°S, due east to 86°E, due north to 60°S.
5841C	From 60°S 90°E, due east to 100°E, due south to coast, westward along coast to 90°E, due north to 60°S.
5841D	From 60°S 100°E, due east to 110°E, due south to coast, westward along coast to 100°E, due north to 60°S.
5841E	From 60°S 110°E, due east to 120°E, due south to coast, westward along coast to 110°E, due north to 60°S.
5841F	From 60°S 120°E, due east to 130°E, due south to coast, westward along coast to 120°E, due north to 60°S.
5841G	From 60°S 130°E, due east to 140°E, due south to coast, westward along coast to 130°E, due north to 60°S.
5841H	From 60°S 140°E, due east to 150°E, due south to coast, westward along coast to 140°E, due north to 60°S.
5842A	From 62°S 30°E, due east to 40°E, due south to coast, westward along coast to 30°E, due north to 62°S.
5842B	From 62°S 40°E, due east to 50°E, due south to coast, westward along coast to 40°E, due north to 62°S.
5842C	From 62°S 50°E, due east to 60°E, due south to coast, westward along coast to 50°E, due north to 62°S.
5842D	From 62°S 60°E, due east to 70°E, due south to coast, westward along coast to 60°E, due north to 62°S.
5842E	From 62°S 70°E, due east to 73°10'E, due south to 64°S, due east to 80°E, due south to coast, westward along coast to 70°E, due north to 62°S.
5843aA	Whole division, from 56°S 60°E, due east to 73°10'E, due south to 62°S, due west to 60°E, due north to 56°S.
5843bA	From 56°S 73°10'E, due east to 79°E, south to 59°S, due west to 73°10'E, due north to 56°S.
5843bB	From 60°S 73°10'E, due east to 86°E, south to 64°S, due west to 73°10'E, due north to 60°S.
5843bC	From 59°S 73°10'E, due east to 79°E, south to 60°S, due west to 73°10'E, due north to 59°S.
5843bD	From 59°S 79°E, due east to 86°E, south to 60°S, due west to 79°E, due north to 59°S.
5843bE	From 56°S 79°E, due east to 80°E, due north to 55°S, due east to 86°E, south to 59°S, due west to 79°E, due north to 56°S.
5844A	From 51°S 40°E, due east to 42°E, due south to 54°S, due west to 40°E, due north to 51°S.
5844B	From 51°S 42°E, due east to 46°E, due south to 54°S, due west to 42°E, due north to 51°S.
5844C	From 51°S 46°E, due east to 50°E, due south to 54°S, due west to 46°E, due north to 51°S.
5844D	Whole division excluding SSRUs A, B, C, and with outer boundary from 50°S 30°E, due east to 60°E, due south to 62°S, due west to 30°E, due north to 50°S.

continued

*This is a preliminary version of the conservation measures–
further checking and verification is to be done by the Secretariat*

Table 1 (continued)

SSRU	Boundary line
586B	From 45°S 44°E, due east to 48°E, due south to 48°S, due west to 44°E, due north to 45°S.
586C	From 45°S 48°E, due east to 51°E, due south to 48°S, due west to 48°E, due north to 45°S.
586D	From 45°S 51°E, due east to 54°E, due south to 48°S, due west to 51°E, due north to 45°S.
587A	From 45°S 37°E, due east to 40°E, due south to 48°S, due west to 37°E, due north to 45°S.
587B	From 45°S 40°E, due east to 44°E, due south to 48°S, due west to 40°E, due north to 45°S.
881A	From 60°S 150°E, due east to 170°E, due south to 65°S, due west to 150°E, due north to 60°S.
881B	From 60°S 170°E, due east to 179°E, due south to 66°40'S, due west to 170°E, due north to 60°S.
881C	From 60°S 179°E, due east to 170°W, due south to 70°S, due west to 178°W, due north to 66°40'S, due west to 179°E, due north to 60°S.
881D	From 65°S 150°E, due east to 160°E, due south to coast, westward along coast to 150°E, due north to 65°S.
881E	From 65°S 160°E, due east to 170°E, due south to 68°30'S, due west to 160°E, due north to 65°S.
881F	From 68°30'S 160°E, due east to 170°E, due south to coast, westward along coast to 160°E, due north to 68°30'S.
881G	From 66°40'S 170°E, due east to 178°W, due south to 70°S, due west to 178°50'E, due south to 70°50'S, due west to 170°E, due north to 66°40'S.
881H	From 70°50'S 170°E, due east to 178°50'E, due south to 73°S, due west to coast, northward along coast to 170°E, due north to 70°50'S.
881I	From 70°S 178°50'E, due east to 170°W, due south to 73°S, due west to 178°50'E, due north to 70°S.
881J	From 73°S at coast near 170°E, due east to 178°50'E, due south to 80°S, due west to 170°E, northward along coast to 73°S.
881K	From 73°S 178°50'E, due east to 170°W, due south to 76°S, due west to 178°50'E, due north to 73°S.
881L	From 76°S 178°50'E, due east to 170°W, due south to 80°S, due west to 178°50'E, due north to 76°S.
881M	From 73°S at coast near 169°30'E, due east to 170°E, due south to 80°S, due west to coast, northward along coast to 73°S.
882A	From 60°S 170°W, due east to 160°W, due south to coast, westward along coast to 170°W, due north to 60°S.
882B	From 60°S 160°W, due east to 150°W, due south to coast, westward along coast to 160°W, due north to 60°S.
882C	From 70°50'S 150°W, due east to 140°W, due south to coast, westward along coast to 150°W, due north to 70°50'S.
882D	From 70°50'S 140°W, due east to 130°W, due south to coast, westward along coast to 140°W, due north to 70°50'S.
882E	From 70°50'S 130°W, due east to 120°W, due south to coast, westward along coast to 130°W, due north to 70°50'S.
882F	From 70°50'S 120°W, due east to 110°W, due south to coast, westward along coast to 120°W, due north to 70°50'S.
882G	From 70°50'S 110°W, due east to 105°W, due south to coast, westward along coast to 110°W, due north to 70°50'S.
882H	From 65°S 150°W, due east to 105°W, due south to 70°50'S, due west to 150°W, due north to 65°S.
882I	From 60°S 150°W, due east to 105°W, due south to 65°S, due west to 150°W, due north to 60°S.
883A	From 60°S 105°W, due east to 95°W, due south to coast, westward along coast to 105°W, due north to 60°S.
883B	From 60°S 95°W, due east to 85°W, due south to coast, westward along coast to 95°W, due north to 60°S.
883C	From 60°S 85°W, due east to 75°W, due south to coast, westward along coast to 85°W, due north to 60°S.
883D	From 60°S 75°W, due east to 70°W, due south to coast, westward along coast to 75°W, due north to 60°S.

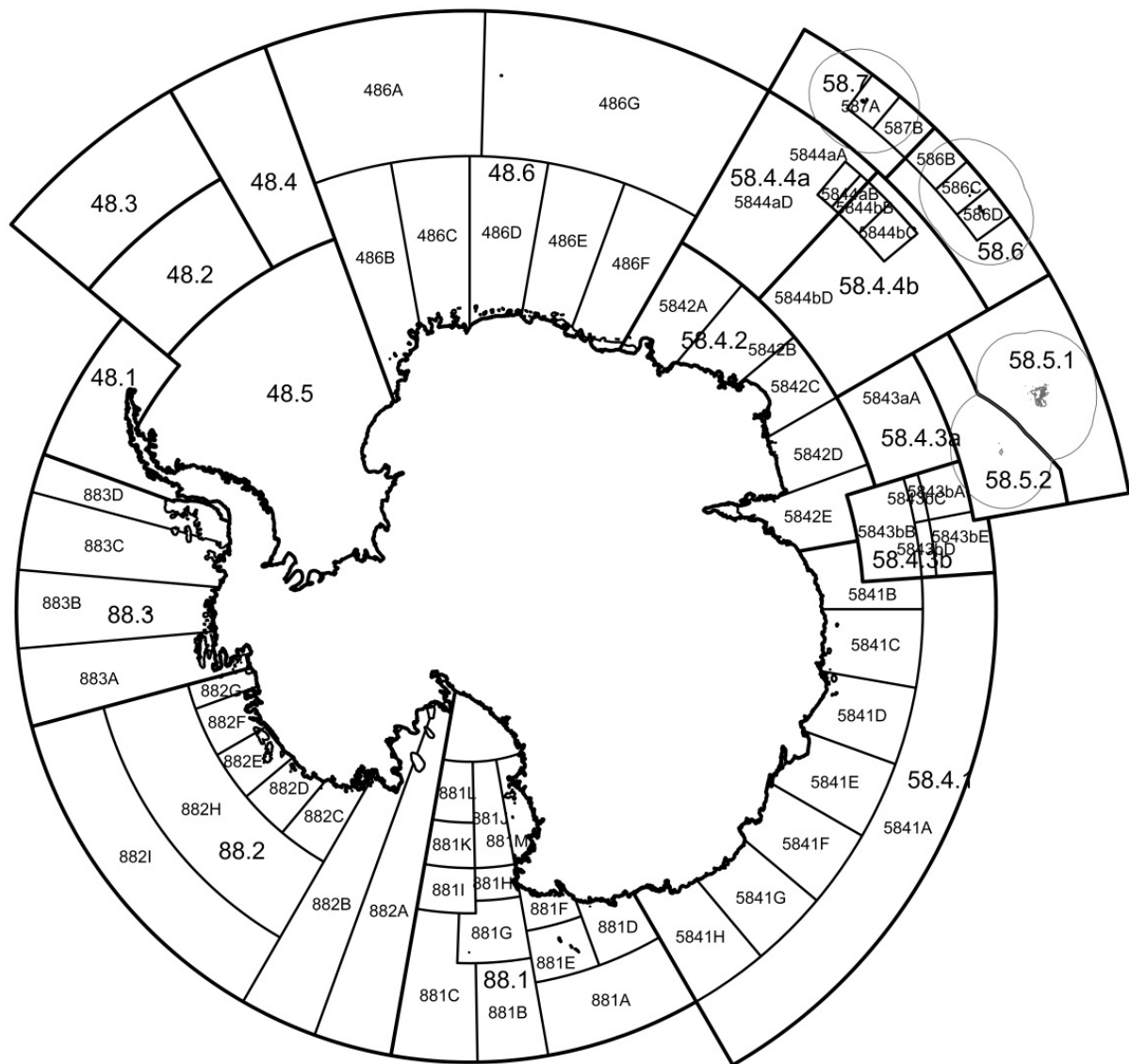


Figure 1: Small-scale research units for new and exploratory fisheries. The boundaries of these units are listed in Table 1. EEZ boundaries for Australia, France and South Africa are marked in order to address notifications for new and exploratory fisheries in waters adjacent to these zones.

**Tagging program for *Dissostichus* spp. and skates
in exploratory fisheries**

1. The responsibility for ensuring tagging, tag recovery and correct reporting shall lie with the Flag State of the fishing vessel. The fishing vessel shall cooperate with the CCAMLR scientific observer in undertaking the tagging program.
2. This program shall apply in each exploratory longline fishery, and any vessel that participates in more than one exploratory fishery shall apply the following in each exploratory fishery in which that vessel fishes:
 - (i) Each longline vessel shall tag and release *Dissostichus* spp., continuously while fishing, at a rate specified in the conservation measure for that fishery according to the [CCAMLR Tagging Protocol](#)¹.
 - (ii) The program shall target toothfish of all sizes in order to meet the tagging requirements. Only fish suitable to tag using the suitability criteria in the CCAMLR Tagging Protocol shall be tagged and released. The availability of these fish shall be reported by the observer. All released toothfish must be double-tagged. All toothfish that are not tagged must be retained.
 - (iii) The length frequency of tagged toothfish shall reflect the length frequency of the catch². Each vessel shall achieve a minimum tag-overlap statistic³ of 60% for each species of *Dissostichus*. However, for any vessel fishing for *Dissostichus* spp. which meets the required tagging rate, the minimum tag overlap statistic of 60% shall not apply for a species of *Dissostichus* for which less than 30 fish have been tagged.
 - (iv) Releases should cover as broad a geographical area as possible. In regions where both species occur, the tagging rate shall be in proportion to the species and lengths of each *Dissostichus* spp. present in the catch.
 - (v) Members wishing to tag skates are advised to follow the protocols developed during the Year-of-the-Skate.
 - (vi) All tagged skates must be double-tagged and released alive.
 - (vii) All toothfish and skate tags for use in exploratory fisheries shall be sourced from the Secretariat.
 - (viii) All toothfish shall be examined for the presence of tags. All skates shall be brought on board or alongside the vessel to be checked for tags and for their condition to be assessed. Recaptured tagged fish (i.e. fish caught that have a previously inserted tag) shall not be re-released, even if at liberty for only a short period.

- (ix) Recaptured tagged toothfish should be biologically sampled (length, weight, sex, gonad stage) and an electronic time-stamped photograph taken of the tag together with recovered otoliths, detailing the number and colour of the tag.
 - (x) Recaptured tagged skates should be identified to the lowest possible taxonomic level and biologically sampled (pelvic length and disc width, weight, sex, gonad stage and caudal thorns for samples in Statistical Subarea 88.1 and SSRUs 882A–B), two electronic time-stamped photographs should be taken, one of the whole skate with tag attached and one close-up of the tag detailing the number and colour of the tag.
- 3. Toothfish that are tagged and released shall not be counted against the catch limits.
 - 4. All relevant tag data, and any data recording tag recaptures, shall be reported electronically in the CCAMLR format⁴ to the Executive Secretary (i) by the vessel every month along with its monthly fine-scale catch and effort (C2) data, and (ii) by the observer as part of the data reporting requirements for observer data⁴.
 - 5. All relevant tag data, any data recording tag recaptures, and specimens (tags and otoliths) from recaptures shall also be reported electronically in the CCAMLR format⁴ to the relevant regional tag data repository as detailed in the [CCAMLR Tagging Protocol](#)^{1,4}.

¹ Available from the CCAMLR website.

² Vessels may implement this requirement by tagging fish at an appropriate rate per number of fish brought alongside the hauler. See the CCAMLR Tagging Protocol for further guidance.

³ The tag overlap statistic (θ) shall be calculated as follows:

$$\theta = \left(1 - \frac{\sum_{i=1}^n |P_i - P_c|}{2} \right) \times 100$$

where P_i is the proportion of all fish tagged in length bin i , P_c is the proportion of all fish caught (i.e. the sum of all fish caught and either landed or tagged and released), for 10 cm length bins.

⁴ In accordance with the CCAMLR Tagging Protocol for exploratory fisheries.

Conservation Measure 41-03 (2021)

Limits on the fishery for *Dissostichus* spp. in Statistical Subarea 48.4 in the 2021/22 season

Species	toothfish
Area	48.4
Season	2021/22
Gear	longline

- | | |
|-------------|--|
| Access | <p>1. Directed fishing shall be by longlines only. The use of all other methods of directed fishing for <i>Dissostichus</i> spp. in Statistical Subarea 48.4 shall be prohibited.</p> <p>2. For the purpose of this fishery, the area open to fishing is defined as that portion of Statistical Subarea 48.4 that lies within the area bounded by latitudes 55°30'S and 57°20'S and by longitudes 25°30'W and 29°30'W, and by latitudes 57°20'S and 60°00'S and by longitudes 24°30'W and 29°00'W.</p> <p>3. A map illustrating the areas defined by paragraph 2 is appended to this conservation measure (Annex 41-03/A). The portion of Statistical Subarea 48.4 outside that defined above shall be closed to directed fishing for <i>Dissostichus</i> spp. in the 2021/22 season.</p> |
| Catch limit | <p>4. The total catch of <i>Dissostichus eleginoides</i> shall be limited to 23 tonnes.</p> <p>5. The total catch of <i>Dissostichus mawsoni</i> shall be limited to 50 tonnes.</p> |
| Season | <p>6. For the purposes of the fishery for <i>Dissostichus</i> spp. in Statistical Subarea 48.4, the fishing season shall be 1 December 2021 to 30 November 2022, or until the catch limits for both species are reached, whichever is sooner. If the catch limit for <i>Dissostichus mawsoni</i> is reached prior to the closure of the fishery, the area south of latitude 57°20'S shall be closed. If the catch limit for <i>Dissostichus eleginoides</i> is reached prior to the closure of the fishery, the area north of 58°00'S shall be closed.</p> |
| By-catch | <p>7. The by-catch of finfish shall not exceed 3.7 tonnes for skates and rays and 11.7 tonnes for <i>Macrourus</i> spp.</p> <p>8. The by-catch of finfish shall trigger a move-on rule if the catch of skates and rays exceeds 5% of the catch of <i>Dissostichus</i> spp. in any one haul or set, or if the catch of <i>Macrourus</i> spp. reaches 150 kg and exceeds 16% of the catch of <i>Dissostichus</i> spp. in any one haul or set. If the move-on rule is triggered, then the fishing vessel shall move to another location at least 5 n miles¹ distant. The fishing vessel shall not return to any point within 5 n miles of the location where the move-on rule was triggered for a period of at least five days². The location where the move-on rule was triggered is defined as the path³ followed by the fishing vessel.</p> <p>9. For the purpose of these by-catch limits, 'Macrourus spp.' and 'skates and rays' shall each be counted as a single species.</p> |
| Mitigation | <p>10. Fishing in Statistical Subarea 48.4 shall be carried out in accordance with the provisions of Conservation Measure 25-02.</p> |

11. Any vessel catching a total of three (3) seabirds shall immediately be required to set longlines at night only (i.e. during the hours of darkness between the times of nautical twilight⁴)⁵.
- Observers 12. Each vessel participating in the fishery for *Dissostichus* spp. in Statistical Subarea 48.4 shall have at least one scientific observer, appointed in accordance with the CCAMLR Scheme of International Scientific Observation, on board throughout all fishing activities within the fishing period.
- Data: catch/effort 13. For the purpose of implementing this conservation measure, the following shall apply:
 - (i) the Five-day Catch and Effort Reporting System set out in Conservation Measure 23-01;
 - (ii) the Monthly Fine-scale Catch and Effort Data Reporting System set out in Conservation Measure 23-04. Data shall be reported on a haul-by-haul basis. For the purposes of Conservation Measure 23-04, the target species are *Dissostichus eleginoides* and *Dissostichus mawsoni*, and 'by-catch species' are defined as any species other than *Dissostichus* spp.
- Data: biological 14. Fine-scale biological data, as required under Conservation Measure 23-05, shall be collected and recorded. Such data shall be reported in accordance with the CCAMLR Scheme of International Scientific Observation.
- Tagging program 15. Each vessel taking part in the fishery for *Dissostichus* spp. in Statistical Subarea 48.4 shall undertake a tagging program in accordance with the CCAMLR Tagging Protocol. The following additional provisions shall apply:
 - (i) fish should be tagged at an average rate of five fish per tonne of green weight catch throughout the season;
 - (ii) fish should be tagged that have been caught across as broad a range of depths within the designated area as practicable;
 - (iii) fish of a range of total lengths should be tagged.
- Environmental protection 16. Conservation Measure 26-01 applies.
 - ¹ This provision concerning the minimum distance separating fishing locations is adopted pending the adoption of a more appropriate definition of a fishing location by the Commission.
 - ² The specified period is adopted in accordance with the reporting period specified in Conservation Measure 23-01, pending the adoption of a more appropriate period by the Commission.
 - ³ For a longline or a pot, the path is defined from the point at which the first anchor of a set was deployed to the point at which the last anchor of that set was deployed.

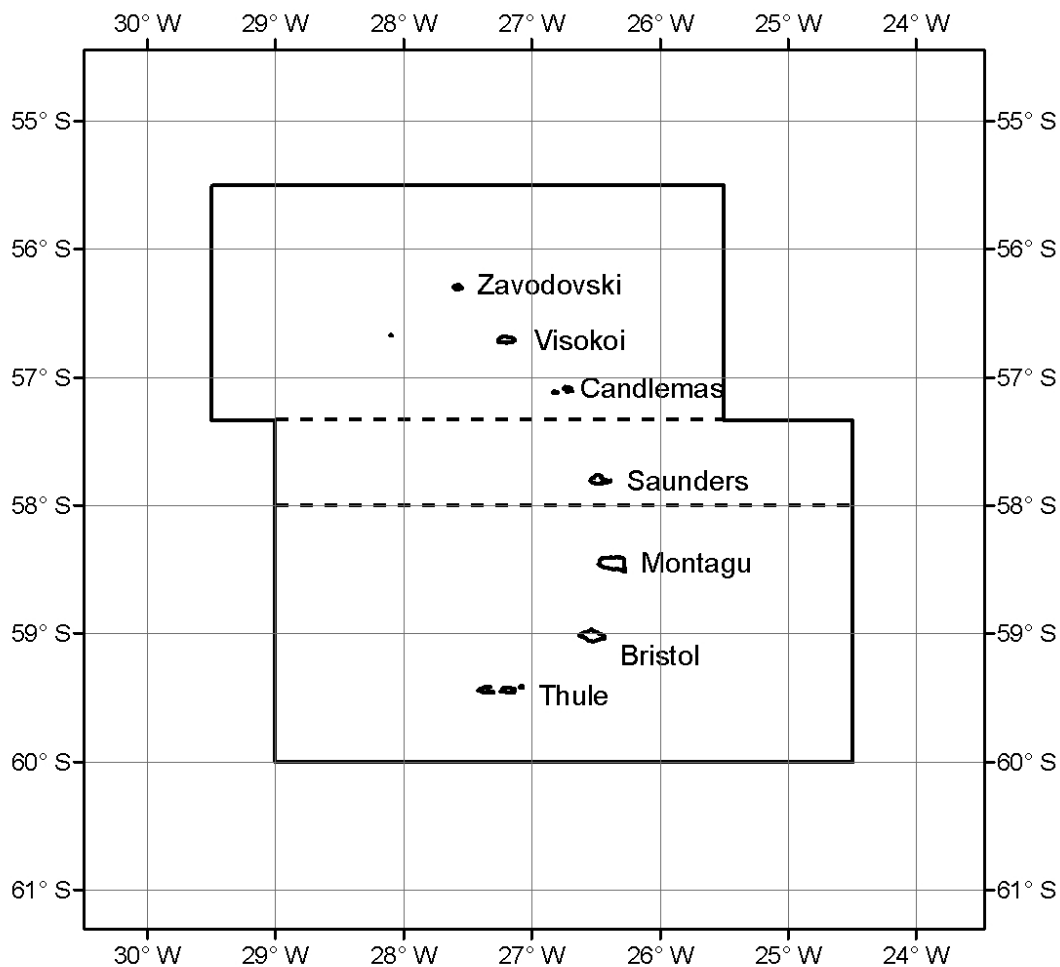
*This is a preliminary version of the conservation measures—
further checking and verification is to be done by the Secretariat*

41-03

- ⁴ The exact times of nautical twilight are set forth in the Nautical Almanac tables for the relevant latitude, local time and date. A copy of the algorithm for calculating these times is available from the CCAMLR Secretariat. All times, whether for ship operations or observer reporting, shall be referenced to Coordinated Universal Time (UTC).
- ⁵ Wherever possible, setting of lines should be completed at least three hours before sunrise (to reduce loss of bait to/catches of white-chinned petrels).

Annex 41-03/A

Statistical Subarea 48.4 – The fishery as defined in paragraph 2. Latitudes and longitudes are given in degrees, and the dashed lines indicate latitudes 57°20'S and 58°00'S (refer paragraph 6).



Conservation Measure 41-04 (2021)

**Limits on the exploratory fishery for *Dissostichus mawsoni*
in Statistical Subarea 48.6 in the 2021/22 season**

Species	toothfish
Area	48.6
Season	2021/22
Gear	longline

The Commission hereby adopts the following conservation measure in accordance with Conservation Measure 21-02:

- | | |
|-----------------------|--|
| Access | <p>1. Fishing for <i>Dissostichus mawsoni</i> in Statistical Subarea 48.6 shall be limited to the exploratory longline fishery by Japan, South Africa and Spain. The fishery shall be conducted by Japanese, South African and Spanish flagged vessels using longlines only. No more than one vessel per country shall fish at any one time.</p> <p>2. This fishery shall be subject to the conditions in Conservation Measure 41-01, Annex 41-01/B. For the purpose of this fishery, the area open to fishing is defined by the research blocks in Annex 41-04/A.</p> |
| Catch limit | <p>3. The total catch of <i>Dissostichus mawsoni</i> in Statistical Subarea 48.6 in the 2021/22 season shall not exceed a precautionary catch limit of 576 tonnes applied as follows:</p> <p style="margin-left: 40px;">Research block 48.6_2 – 134 tonnes
Research block 48.6_3 – 36 tonnes
Research block 48.6_4 – 196 tonnes
Research block 48.6_5 – 210 tonnes.</p> |
| Season | <p>4. For the purpose of the exploratory longline fishery for <i>Dissostichus mawsoni</i> in Statistical Subarea 48.6, the 2021/22 season is defined as the period from 1 December 2021 to 30 November 2022.</p> |
| By-catch | <p>5. The by-catch in this fishery shall be regulated as set out in Conservation Measure 33-03.</p> |
| Mitigation | <p>6. The exploratory longline fishery for <i>Dissostichus mawsoni</i> in Statistical Subarea 48.6 shall be carried out in accordance with the provisions of Conservation Measure 25-02.</p> <p>7. Any vessel catching a total of three (3) seabirds shall immediately change to night setting only (i.e. setting only during the hours of darkness between the times of nautical twilight¹)².</p> |
| Observers | <p>8. Each vessel participating in the fishery shall have at least two scientific observers, one of whom shall be an observer appointed in accordance with the CCAMLR Scheme of International Scientific Observation, on board throughout all fishing activities within the fishing period.</p> |
| Data:
catch/effort | <p>9. For the purpose of implementing this conservation measure in the 2021/22 season, the following shall apply:</p> |

- (i) the Daily Catch and Effort Reporting System set out in Conservation Measure 23-07;
 - (ii) the Monthly Fine-scale Catch and Effort Reporting System set out in Conservation Measure 23-04. Fine-scale data shall be submitted on a haul-by-haul basis.
10. For the purpose of Conservation Measures 23-07 and 23-04, the target species is *Dissostichus mawsoni* (any *Dissostichus eleginoides* caught shall be counted towards the overall catch limit for *Dissostichus mawsoni*) and 'by-catch species' are defined as any species other than *Dissostichus* spp.
- Data: biological 11. Fine-scale biological data, as required under Conservation Measure 23-05, shall be collected and recorded. Such data shall be reported in accordance with the CCAMLR Scheme of International Scientific Observation.
- Research 12. Each vessel participating in this exploratory fishery shall conduct fishery-based research in accordance with the Research Plan and Tagging Program described in Conservation Measure 41-01, Annex 41-01/B and Annex 41-01/C respectively.
13. Toothfish shall be tagged at a rate of at least five fish per tonne green weight caught.
- Environ- mental protection 14. Conservation Measure 26-01 applies
15. There shall be no offal³ discharge in this fishery.

Conservation Measures 22-06, 22-07 and 22-08 apply.

¹ The exact times of nautical twilight are set forth in the Nautical Almanac tables for the relevant latitude, local time and date. A copy of the algorithm for calculating these times is available from the CCAMLR Secretariat. All times, whether for ship operations or observer reporting, shall be referenced to Coordinated Universal Time (UTC).

² Wherever possible, when night setting, setting of lines should be completed at least three hours before sunrise (to reduce loss of bait to/catches of white-chinned petrels).

³ 'Offal' is defined as bait and by-products from the processing of fish and other organisms, including parts or sections of fish or organisms which are by-products of processing.

Annex 41-04/A

Research blocks

Research block 48.6_2 coordinates

54°00'S	01°00'E
55°00'S	01°00'E
55°00'S	02°00'E
55°30'S	02°00'E
55°30'S	04°00'E

Research block 48.6_2 coordinates (continued)

56°30'S	04°00'E
56°30'S	07°00'E
56°00'S	07°00'E
56°00'S	08°00'E
54°00'S	08°00'E
54°00'S	09°00'E
53°00'S	09°00'E
53°00'S	03°00'E
53°30'S	03°00'E
53°30'S	02°00'E
54°00'S	02°00'E

Research block 48.6_3 coordinates

64°30'S	01°00'E
66°00'S	01°00'E
66°00'S	04°00'E
65°00'S	04°00'E
65°00'S	07°00'E
64°30'S	07°00'E

Research block 48.6_4 coordinates

68°20'S	10°00'E
68°20'S	13°00'E
69°30'S	13°00'E
69°30'S	10°00'E
69°45'S	10°00'E
69°45'S	06°00'E
69°00'S	06°00'E
69°00'S	10°00'E

Research block 48.6_5 coordinates

71°00'S	15°00'W
71°00'S	13°00'W
70°30'S	13°00'W
70°30'S	11°00'W
70°30'S	10°00'W
69°30'S	10°00'W
69°30'S	09°00'W
70°00'S	09°00'W
70°00'S	08°00'W
69°30'S	08°00'W
69°30'S	07°00'W
70°30'S	07°00'W
70°30'S	10°00'W
71°00'S	10°00'W
71°00'S	11°00'W
71°30'S	11°00'W
71°30'S	15°00'W.

Conservation Measure 41-05 (2021)

**Limits on the exploratory fishery for *Dissostichus mawsoni*
in Statistical Division 58.4.2 in the 2021/22 season**

Species	toothfish
Area	58.4.2
Season	2021/22
Gear	longline

The Commission hereby adopts the following conservation measure in accordance with Conservation Measure 21-02, and notes that this measure would be for one year and that data arising from these activities would be reviewed by the Scientific Committee:

- | | |
|--------------------|--|
| Access | <p>1. Fishing for <i>Dissostichus mawsoni</i> in Statistical Division 58.4.2 shall be limited to the exploratory longline fishery by Australia and France. The fishery shall be conducted by two (2) Australian and one (1) French vessel using longlines only.</p> <p>2. This fishery shall be subject to the conditions in Conservation Measure 41-01, Annex 41-01/B. For the purpose of this fishery, the area open to fishing is defined by the research block in Annex 41-05/A.</p> |
| Catch limit | <p>3. The total catch of <i>Dissostichus mawsoni</i> in Statistical Division 58.4.2 in the 2021/22 season shall not exceed a precautionary catch limit of 127 tonnes applied as follows:</p> <p style="margin-left: 40px;">SSRU A – 0 tonnes
 SSRU B – 0 tonnes
 SSRU C Research block 58.4.2_2 – 55 tonnes
 SSRU D – 0 tonnes
 SSRU E Research block 58.4.2_1 – 72 tonnes.</p> |
| Season | <p>4. For the purpose of the exploratory longline fishery for <i>Dissostichus mawsoni</i> in Statistical Division 58.4.2, the 2021/22 season is defined as the period from 1 December 2021 to 30 November 2022.</p> |
| Fishing operations | <p>5. The exploratory longline fishery for <i>Dissostichus mawsoni</i> in Statistical Division 58.4.2 shall be carried out in accordance with the provisions of Conservation Measure 41-01, except paragraph 6.</p> |
| By-catch | <p>6. The by-catch in this fishery shall be regulated as set out in Conservation Measure 33-03.</p> |
| Mitigation | <p>7. The exploratory longline fishery for <i>Dissostichus mawsoni</i> in Statistical Division 58.4.2 shall be carried out in accordance with the provisions of Conservation Measure 25-02.</p> <p>8. Any vessel catching a total of three (3) seabirds shall immediately change to night setting only (i.e. setting only during the hours of darkness between the times of nautical twilight¹)².</p> |

- | | |
|----------------------------------|--|
| Observers | 9. Each vessel participating in the fishery shall have at least two scientific observers, one of whom shall be an observer appointed in accordance with the CCAMLR Scheme of International Scientific Observation, on board throughout all fishing activities within the fishing period. |
| Research | 10. Each vessel participating in this exploratory fishery shall conduct fishery-based research in accordance with the Research Plan and Tagging Program described in Conservation Measure 41-01, Annex 41-01/B and Annex 41-01/C respectively. |
| | 11. Toothfish shall be tagged at a rate of at least five fish per tonne green weight caught. |
| Data:
catch/effort | 12. For the purpose of implementing this conservation measure in the 2021/22 season, the following shall apply: <ul style="list-style-type: none"> (i) the Daily Catch and Effort Reporting System set out in Conservation Measure 23-07; (ii) the Monthly Fine-scale Catch and Effort Reporting System set out in Conservation Measure 23-04. Fine-scale data shall be submitted on a haul-by-haul basis; (iii) fishing vessels undertaking research in accordance with Conservation Measure 24-01 shall report data in accordance with the requirements (i) and (ii) above. |
| | 13. For the purpose of Conservation Measures 23-07 and 23-04, the target species is <i>Dissostichus mawsoni</i> (any <i>Dissostichus eleginoides</i> caught shall be counted towards the overall catch limit for <i>Dissostichus mawsoni</i>) and 'by-catch species' are defined as any species other than <i>Dissostichus</i> spp. |
| Data:
biological | 14. Fine-scale biological data, as required under Conservation Measure 23-05, shall be collected and recorded. Such data shall be reported in accordance with the CCAMLR Scheme of International Scientific Observation. |
| Environ-
mental
protection | 15. Conservation Measure 26-01 applies. |
| | 16. Conservation Measures 22-06, 22-07 and 22-08 apply. |

¹ The exact times of nautical twilight are set forth in the Nautical Almanac tables for the relevant latitude, local time and date. A copy of the algorithm for calculating these times is available from the CCAMLR Secretariat. All times, whether for ship operations or observer reporting, shall be referenced to Coordinated Universal Time (UTC).

² Wherever possible, when night setting, setting of lines should be completed at least three hours before sunrise (to reduce loss of bait to/catches of white-chinned petrels).

Research blocks

Research block 58.4.2_1 coordinates

66°00'S	70°00'E
67°30'S	70°00'E
67°30'S	76°00'E
66°00'S	76°00'E

Research block 58.4.2_2 coordinates

65°00'S	50°00'E
66°30'S	50°00'E
66°30'S	58°00'E
65°00'S	58°00'E.

Conservation Measure 41-06 (2021)

Limits on the exploratory fishery for *Dissostichus eleginoides* on Elan Bank (Statistical Division 58.4.3a) outside areas of national jurisdiction in the 2021/22 season

Species	toothfish
Area	58.4.3a
Season	2021/22
Gear	longline

The Commission hereby adopts the following conservation measure in accordance with Conservation Measure 21-02:

- | | |
|-----------------------|--|
| Access | <p>1. Fishing for <i>Dissostichus eleginoides</i> on Elan Bank (Statistical Division 58.4.3a) outside areas of national jurisdiction shall be limited to the exploratory fishery using longlines only. Directed fishing shall not take place in 2021/22.</p> <p>2. This fishery shall be subject to the conditions in Conservation Measure 41-01, Annex 41-01/B. The area open to fishing is defined by the research block in Annex 41-06/A.</p> |
| Catch limit | <p>3. The total catch of <i>Dissostichus eleginoides</i> on Elan Bank (Statistical Division 58.4.3a) outside areas of national jurisdiction in the 2021/22 season shall not exceed a precautionary catch limit of 19 tonnes applied as follows:</p> <p style="padding-left: 40px;">Research block 58.4.3a_1 – 19 tonnes.</p> |
| Season | <p>4. For the purpose of the exploratory longline fishery for <i>Dissostichus eleginoides</i> on Elan Bank (Statistical Division 58.4.3a) outside areas of national jurisdiction, the 2021/22 season is defined as the period from 1 December 2021 to 30 November 2022, or until the catch limit is reached, whichever is sooner.</p> |
| By-catch | <p>5. The by-catch in this fishery shall be regulated as set out in Conservation Measure 33-03.</p> |
| Mitigation | <p>6. The operation of this fishery shall be carried out in accordance with Conservation Measure 25-02 so as to minimise the incidental mortality of seabirds in the course of fishing.</p> <p>7. Any vessel catching a total of three (3) seabirds shall immediately change to night setting only (i.e. setting only during the hours of darkness between the times of nautical twilight¹)².</p> |
| Observers | <p>8. Each vessel participating in this fishery shall have at least one scientific observer appointed in accordance with the CCAMLR Scheme of International Scientific Observation and, where possible, one additional scientific observer, on board throughout all fishing activities within the fishing period.</p> |
| Data:
catch/effort | <p>9. For the purpose of implementing this conservation measure in the 2021/22 season, the following shall apply:</p> |

- (i) the Daily Catch and Effort Reporting System set out in Conservation Measure 23-07;
 - (ii) the Monthly Fine-scale Catch and Effort Reporting System set out in Conservation Measure 23-04. Fine-scale data shall be submitted on a haul-by-haul basis.
10. For the purpose of Conservation Measures 23-07 and 23-04, the target species is *Dissostichus eleginoides* (any *Dissostichus mawsoni* caught shall be counted towards the overall catch limit for *Dissostichus eleginoides*) and 'by-catch species' are defined as any species other than *Dissostichus* spp.
- Data: biological 11. Fine-scale biological data, as required under Conservation Measure 23-05, shall be collected and recorded. Such data shall be reported in accordance with the CCAMLR Scheme of International Scientific Observation.
- Research 12. Each vessel participating in this exploratory fishery shall conduct fishery-based research in accordance with the Research Plan and Tagging Program described in Conservation Measure 41-01, Annex 41-01/B and Annex 41-01/C respectively.
13. Toothfish shall be tagged at a rate of at least five fish per tonne green weight caught.
- Environ- mental protection 14. Conservation Measure 26-01 applies.
15. Conservation Measures 22-06, 22-07 and 22-08 apply.
- ¹ The exact times of nautical twilight are set forth in the Nautical Almanac tables for the relevant latitude, local time and date. A copy of the algorithm for calculating these times is available from the CCAMLR Secretariat. All times, whether for ship operations or observer reporting, shall be referenced to Coordinated Universal Time (UTC).
- ² Wherever possible, when night setting, setting of lines should be completed at least three hours before sunrise (to reduce loss of bait to/catches of white-chinned petrels).

Annex 41-06/A

Research blocks

Research block 58.4.3a_1 coordinates

56°00'S	65°00'E
57°30'S	65°00'E
57°30'S	73°00'E
56°00'S	73°00'E.

Conservation Measure 41-07 (2021)

Limits on the exploratory fishery for *Dissostichus mawsoni* on BANZARE Bank (Statistical Division 58.4.3b) outside areas of national jurisdiction in the 2021/22 season

Species	toothfish
Area	58.4.3b
Season	2021/22
Gear	longline

The Commission hereby adopts the following conservation measure in accordance with Conservation Measure 21-02:

- | | |
|-----------------------|---|
| Access | 1. Fishing for <i>Dissostichus mawsoni</i> on BANZARE Bank (Statistical Division 58.4.3b) outside areas of national jurisdiction shall be limited to longlines only. |
| Catch limit | <p>2. The total catch of <i>Dissostichus mawsoni</i> on BANZARE Bank (Statistical Division 58.4.3b) outside areas of national jurisdiction in the 2021/22 season shall not exceed a precautionary catch limit of 0 tonnes applied as follows:</p> <p style="margin-left: 40px;">SSRU A – 0 tonnes
 SSRU B – 0 tonnes
 SSRU C – 0 tonnes
 SSRU D – 0 tonnes
 SSRU E – 0 tonnes.</p> |
| Season | 3. For the purpose of the exploratory longline fishery for <i>Dissostichus mawsoni</i> on BANZARE Bank (Statistical Division 58.4.3b) outside areas of national jurisdiction, the 2021/22 season is defined as the period from 1 December 2021 to 30 November 2022, or until the catch limit is reached, whichever is sooner. |
| By-catch | 4. The by-catch in this fishery shall be regulated as set out in Conservation Measure 33-03. |
| Mitigation | <p>5. The operation of this fishery shall be carried out in accordance with Conservation Measure 25-02 so as to minimise the incidental mortality of seabirds in the course of fishing.</p> <p>6. Any vessel catching a total of three (3) seabirds shall immediately change to night setting only (i.e. setting only during the hours of darkness between the times of nautical twilight¹)².</p> |
| Observers | 7. Each vessel participating in this fishery shall have at least one scientific observer appointed in accordance with the CCAMLR Scheme of International Scientific Observation and, where possible, one additional scientific observer, on board throughout all fishing activities within the fishing period. |
| Data:
catch/effort | 8. For the purpose of implementing this conservation measure in the 2021/22 season, the following shall apply: |

- (i) the Daily Catch and Effort Reporting System set out in Conservation Measure 23-07;
 - (ii) the Monthly Fine-scale Catch and Effort Reporting System set out in Conservation Measure 23-04. Fine-scale data shall be submitted on a haul-by-haul basis.
9. For the purpose of Conservation Measures 23-07 and 23-04, the target species is *Dissostichus mawsoni* (any *Dissostichus eleginoides* caught shall be counted towards the overall catch limit for *Dissostichus mawsoni*) and ‘by-catch species’ are defined as any species other than *Dissostichus* spp.
- Data: biological 10. Fine-scale biological data, as required under Conservation Measure 23-05, shall be collected and recorded. Such data shall be reported in accordance with the CCAMLR Scheme of International Scientific Observation.
- Research 11. Each vessel participating in this exploratory fishery shall conduct fishery-based research in accordance with the Research Plan and Tagging Program described in Conservation Measure 41-01, Annex 41-01/B and Annex 41-01/C respectively.
12. Research shall be conducted in accordance with Conservation Measure 24-01.
13. Toothfish shall be tagged at a rate of at least five fish per tonne green weight caught.
- Environ- mental protection 14. Conservation Measure 26-01 applies.
15. Conservation Measures 22-06, 22-07 and 22-08 apply.
- ¹ The exact times of nautical twilight are set forth in the Nautical Almanac tables for the relevant latitude, local time and date. A copy of the algorithm for calculating these times is available from the CCAMLR Secretariat. All times, whether for ship operations or observer reporting, shall be referenced to Coordinated Universal Time (UTC).
- ² Wherever possible, when night setting, setting of lines should be completed at least three hours before sunrise (to reduce loss of bait to/catches of white-chinned petrels).

Conservation Measure 41-08 (2021)

Limits on the fishery for *Dissostichus eleginoides* in

Statistical Division 58.5.2 in the 2021/22 and 2022/23 seasons

Species	toothfish
Area	58.5.2
Season	2021/22, 2022/23
Gear	various

- | | |
|-----------------------|--|
| Access | 1. The fishery for <i>Dissostichus eleginoides</i> in Statistical Division 58.5.2 shall be conducted by vessels using trawls, pots or longlines only. |
| Catch limit | 2. The total catch of <i>Dissostichus eleginoides</i> in Statistical Division 58.5.2 in the 2021/22 and 2022/23 seasons shall be limited to 3 010 tonnes in each season west of 79°20'E. |
| Season | 3. For the purpose of the trawl and pot fisheries for <i>Dissostichus eleginoides</i> in Statistical Division 58.5.2, the 2021/22 and 2022/23 seasons are defined as the period from 1 December to 30 November in each season, or until the catch limit is reached, whichever is sooner. For the purpose of the longline fishery for <i>Dissostichus eleginoides</i> in Statistical Division 58.5.2, the 2021/22 and 2022/23 seasons are defined as the period from 1 May to 14 September in each season, or until the catch limit is reached, whichever is sooner. The season for longline fishing operations shall be extended from 1 April to 30 April and 15 September to 30 November. The extension period will be subject to a total catch limit of three (3) seabirds per vessel. If three (3) seabirds are caught during the season extension, fishing throughout the season extension shall cease immediately for that vessel for the remainder of that fishing season. |
| By-catch | 4. Fishing shall cease if the by-catch of any species reaches its by-catch limit as set out in Conservation Measure 33-02. |
| Mitigation | 5. The operation of the trawl fishery shall be carried out in accordance with Conservation Measure 25-03 so as to minimise the incidental mortality of seabirds and mammals through the course of fishing. The operation of the longline fishery shall be carried out in accordance with Conservation Measure 25-02. |
| Observers | 6. Each vessel participating in this fishery shall have at least one scientific observer, and may include one appointed in accordance with the CCAMLR Scheme of International Scientific Observation, on board throughout all fishing activities within the fishing period, with the exception of the period 1 April to 30 April when two scientific observers shall be carried. |
| Data:
catch/effort | 7. For the purpose of implementing this conservation measure, the following shall apply: <div style="margin-left: 20px;"> (i) the Ten-day Catch and Effort Reporting System set out in Annex 41-08/A; </div> |

- (ii) the Monthly Fine-scale Catch and Effort Reporting System set out in Annex 41-08/A. Fine-scale data shall be submitted on a haul-by-haul basis.
8. For the purpose of Annex 41-08/A, the target species is *Dissostichus eleginoides* and by-catch species are defined as any species other than *Dissostichus eleginoides*.
9. The total number and weight of *Dissostichus eleginoides* discarded, including those with the 'jellymeat' condition, shall be reported. These fish will count towards the total allowable catch.
- Data: biological 10. Fine-scale biological data, as required under Annex 41-08/A, shall be collected and recorded. Such data shall be reported in accordance with the CCAMLR Scheme of International Scientific Observation.
- Environmental protection 11. Conservation Measure 26-01 applies.

Annex 41-08/A

Data reporting system

1. A ten-day catch and effort reporting system shall be implemented:
- (i) for the purpose of implementing this system, the calendar month shall be divided into three reporting periods, viz: day 1 to day 10, day 11 to day 20 and day 21 to the last day of the month. The reporting periods are hereafter referred to as periods A, B and C;
 - (ii) at the end of each reporting period, each Contracting Party participating in the fishery shall obtain from each of its vessels information on total catch and total days and hours fished for that period and shall, by electronic transmission, transmit the aggregated catch and days and hours fished for its vessels so as to reach the Executive Secretary no later than the end of the next reporting period;
 - (iii) a report must be submitted by every Contracting Party taking part in the fishery for each reporting period for the duration of the fishery, even if no catches are taken;
 - (iv) the catch of *Dissostichus eleginoides* and of all by-catch species must be reported;
 - (v) such reports shall specify the month and reporting period (A, B and C) to which each report refers;
 - (vi) immediately after the deadline has passed for receipt of the reports for each period, the Executive Secretary shall notify all Contracting Parties engaged in fishing activities in the division of the total catch taken during the reporting period and the total aggregate catch for the season to date;

- (vii) at the end of every three reporting periods, the Executive Secretary shall inform all Contracting Parties of the total catch taken during the three most recent reporting periods and the total aggregate catch for the season to date.
2. A fine-scale catch, effort and biological data reporting system shall be implemented:
- (i) the scientific observer(s) on board each vessel shall collect the data required to complete the CCAMLR fine-scale catch and effort data form C1 for trawl fishing, form C2 for longline fishing, or form C5 for pot fishing, latest versions. These data shall be submitted to the CCAMLR Secretariat not later than one month after the vessel returns to port;
 - (ii) the catch of *Dissostichus eleginoides* and of all by-catch species must be reported;
 - (iii) the numbers of seabirds and marine mammals of each species caught and released or killed must be reported;
 - (iv) the scientific observer(s) on board each vessel shall collect data on the length composition from representative samples of *Dissostichus eleginoides* and by-catch species:
 - (a) length measurements shall be to the nearest centimetre below;
 - (b) representative samples of length composition shall be taken from each fine-scale grid rectangle (0.5° latitude by 1° longitude) fished in each calendar month;
 - (v) the above data shall be submitted to the CCAMLR Secretariat not later than one month after the vessel returns to port.

Conservation Measure 41-09 (2021)

**Limits on the exploratory fishery for *Dissostichus mawsoni*
in Statistical Subarea 88.1 in the 2021/22 season**

Species	toothfish
Area	88.1
Season	2021/22
Gear	longline

The Commission hereby adopts the following conservation measure in accordance with Conservation Measure 21-02:

Access 1. Fishing for *Dissostichus mawsoni* in Statistical Subarea 88.1 shall be limited to the exploratory longline fishery by Australia, Japan, Republic of Korea, New Zealand, Spain, Ukraine, UK and Uruguay. The fishery shall be conducted by a maximum in the season of two (2) Australian, one (1) Japanese, six (6) Korean, three (3) New Zealand, one (1) Spanish, five (5) Ukrainian, three (3) UK and one (1) Uruguayan flagged vessels using longlines only.

Catch limit 2. In accordance with Conservation Measure 91-05, paragraph 28, the precautionary catch limits for Statistical Subarea 88.2 small-scale research units (SSRUs) A–B are included in the catch limits in this paragraph.

The total catch of *Dissostichus mawsoni* in the 2021/22 season shall not exceed a precautionary catch limit of 3 495 tonnes applied as follows:

(i) all areas outside the Ross Sea region marine protected area and north of 70°S, which in Statistical Subarea 88.1 include SSRU A and SSRUs B, C and G –

664 tonnes

(ii) all areas outside the Ross Sea region marine protected area and south of 70°S, which in Statistical Subarea 88.1 include SSRUs G, H, I, J and K –

2 307 tonnes.

(iii) Special Research Zone of the Ross Sea region marine protected area –

459 tonnes.

3. A discrete research catch limit of 65 tonnes has been set aside in the 2021/22 season as follows:

(i) for the Ross Sea shelf survey notified by New Zealand under Conservation Measure 24-01, to be undertaken by the vessel *San Aotea II* – 65 tonnes

This research catch limit is fixed and shall not be modified by any overrun of the individual or combined SSRU catch limits for target or by-catch species in Statistical Subarea 88.1.

- | | | |
|--------------------|----|--|
| Season | 4. | For the purpose of the exploratory longline fishery for <i>Dissostichus mawsoni</i> in Statistical Subarea 88.1, the 2021/22 season is defined as the period from 1 December 2021 to 31 August 2022. |
| Fishing operations | 5. | The exploratory longline fishery for <i>Dissostichus mawsoni</i> in Statistical Subarea 88.1 shall be carried out in accordance with the provisions of Conservation Measure 41-01, except paragraph 6. |
| By-catch | 6. | The by-catch limits for Statistical Subarea 88.2 SSRUs A–B are included in the by-catch limits in this paragraph. This paragraph also applies to Statistical Subarea 88.2 SSRUs A–B. |

The total by-catch¹ in the 2021/22 season shall not exceed a precautionary catch limit of 170 tonnes of skates and rays, and 494 tonnes of *Macrourus* spp. Within these total by-catch limits, individual limits will apply as follows:

- (i) all areas outside the Ross Sea region marine protected area and north of 70°S, which in Statistical Subarea 88.1 include SSRU A and SSRUs B, C and G –

33 tonnes of skates and rays, 106 tonnes of *Macrourus* spp., 33 tonnes of other species
- (ii) all areas outside the Ross Sea region marine protected area and south of 70°S, which in Statistical Subarea 88.1 include SSRUs G, H, I, J and K –

115 tonnes of skates and rays, 316 tonnes of *Macrourus* spp., 115 tonnes of other species
- (iii) Special Research Zone of the Ross Sea region marine protected area –

22 tonnes of skates and rays, 72 tonnes of *Macrourus* spp., 22 tonnes of other species.

For the purposes of this paragraph ‘*Macrourus* spp.’ and ‘skates and rays’ should each be counted as a single species.

On all vessels, all skates and rays must be brought on board or alongside the vessel to be checked for tags and for their condition to be assessed. Recaptured tagged skates and rays, as per Conservation Measure 41-01, Annex 41-01/C, paragraphs 2(vii) and (ix), should not be re-released. Unless otherwise specified by scientific observers, all other skates and rays caught alive and with a high probability of survival should be released alive, by vessels, by cutting snoods, and when practical, removing the hooks, and the number should be recorded and reported to the Secretariat.

If the by-catch of any one species is equal to, or greater than, 1 tonne in any one haul or set², then the fishing vessel shall move to another location at least 5 n miles³ distant. The fishing vessel shall not return to any point within 5 n miles of the location where the by-catch exceeded 1 tonne for a period of at least five days⁴. The location where the by-catch exceeded 1 tonne is defined as the path⁵ followed by the fishing vessel.

If the catch of *Macrourus* spp. taken by a single vessel in any two 10-day periods⁶ in any SSRU exceeds 1 500 kg in each 10-day period and exceeds 16% of the catch of *Dissostichus* spp. by that vessel in that SSRU, the vessel shall cease fishing in that SSRU for the remainder of the season.

- | | |
|-----------------------|---|
| Mitigation | 7. The exploratory longline fishery for <i>Dissostichus mawsoni</i> in Statistical Subarea 88.1 shall be carried out in accordance with the provisions of Conservation Measure 25-02. |
| | 8. Any vessel catching a total of three (3) seabirds shall immediately change to night setting only (i.e. setting only during the hours of darkness between the times of nautical twilight ⁷) ⁸ . |
| Observers | 9. Each vessel participating in the fishery shall have at least two scientific observers, one of whom shall be an observer appointed in accordance with the CCAMLR Scheme of International Scientific Observation, on board throughout all fishing activities within the fishing period. |
| VMS | 10. Each vessel participating in this exploratory longline fishery shall be required to operate a VMS at all times, in accordance with Conservation Measure 10-04. |
| CDS | 11. Each vessel participating in this exploratory longline fishery shall be required to participate in the Catch Documentation Scheme for <i>Dissostichus</i> spp., in accordance with Conservation Measure 10-05. |
| Research | 12. Each vessel participating in this exploratory fishery shall conduct fishery-based research in accordance with the Research Plan and Tagging Program described in Conservation Measure 41-01, Annex 41-01/B and Annex 41-01/C respectively. The setting of research hauls (Conservation Measure 41-01, Annex 41-01/B, paragraphs 3 and 4) is not required. |
| | 13. Toothfish shall be tagged at a rate of at least one fish per tonne green weight caught in each SSRU. |
| Data:
catch/effort | 14. For the purpose of implementing this conservation measure in the 2021/22 season, the following shall apply: <ul style="list-style-type: none"> (i) the Daily Catch and Effort Reporting System set out in Conservation Measure 23-07; |

- (ii) the Monthly Fine-scale Catch and Effort Reporting System set out in Conservation Measure 23-04. Fine-scale data shall be submitted on a haul-by-haul basis.
15. For the purpose of Conservation Measures 23-07 and 23-04, the target species is *Dissostichus mawsoni* (any *Dissostichus eleginoides* caught shall be counted towards the overall catch limit for *Dissostichus mawsoni*) and ‘by-catch species’ are defined as any species other than *Dissostichus* spp.
- Data:
biological
16. Fine-scale biological data, as required under Conservation Measure 23-05, shall be collected and recorded. Such data shall be reported in accordance with the CCAMLR Scheme of International Scientific Observation.
- Environ-
mental
protection
17. Conservation Measure 26-01 applies.
18. Conservation Measures 22-06, 22-07, 22-08 and 22-09 apply.
- ¹ Total green weight caught, excluding individuals released alive.
- ² For the purposes of this conservation measure, for a longline, each haul applies to a single longline regardless of how contiguous sections of gear are connected.
- ³ This provision concerning the minimum distance separating fishing locations is adopted pending the adoption of a more appropriate definition of a fishing location by the Commission.
- ⁴ The specified period is adopted in accordance with the reporting period specified in Conservation Measure 23-01, pending the adoption of a more appropriate period by the Commission.
- ⁵ For a longline, the path is defined from the point at which the first anchor of a set was deployed to the point at which the last anchor of that set was deployed.
- ⁶ A 10-day period is defined as day 1 to day 10, day 11 to day 20, or day 21 to the last day of the month.
- ⁷ The exact times of nautical twilight are set forth in the Nautical Almanac tables for the relevant latitude, local time and date. A copy of the algorithm for calculating these times is available from the CCAMLR Secretariat. All times, whether for ship operations or observer reporting, shall be referenced to Coordinated Universal Time (UTC).
- ⁸ Wherever possible, when night setting, setting of lines should be completed at least three hours before sunrise (to reduce loss of bait to/catches of white-chinned petrels).

Conservation Measure 41-10 (2021)

**Limits on the exploratory fishery for *Dissostichus mawsoni*
in Statistical Subarea 88.2 in the 2021/22 season**

Species	toothfish
Area	88.2
Season	2021/22
Gear	longline

The Commission hereby adopts the following conservation measure in accordance with Conservation Measure 21-02:

- | | |
|-------------|---|
| Access | 1. Fishing for <i>Dissostichus mawsoni</i> in Statistical Subarea 88.2 shall be limited in the 2021/22 season to the exploratory longline fishery by Australia, Japan, the Republic of Korea, New Zealand, Ukraine, UK and Uruguay. The fishery in small-scale research units (SSRUs) C, D, E, F, G, H and I shall be conducted by two (2) Australian, one (1) Japanese, six (6) Korean, three (3) New Zealand, five (5) Ukrainian, three (3) UK and one (1) Uruguayan flagged vessels using longlines only. |
| Catch limit | <p>2. The total catch of <i>Dissostichus mawsoni</i> in Statistical Subarea 88.2 in the 2021/22 season shall not exceed a precautionary catch limit applied as follows:</p> <ul style="list-style-type: none"> (i) SSRUs A and B outside the Ross Sea region marine protected area and north of 70°S – included in the catch limit in Conservation Measure 41-09, paragraph 2(i) (ii) SSRUs A and B outside the Ross Sea region marine protected area and south of 70°S – included in the catch limit in Conservation Measure 41-09, paragraph 2(ii) (iii) The part of SSRU A within the Special Research Zone of the Ross Sea region marine protected area – included in the catch limit in Conservation Measure 41-09, paragraph 2(iii) (iv) Research block 1 as defined in Annex 41-10/A – 230 tonnes (v) Research block 2 as defined in Annex 41-10/A – 223 tonnes (vi) Research block 3 as defined in Annex 41-10/A – 204 tonnes (vii) Research block 4 as defined in Annex 41-10/A – 154 tonnes (viii) SSRU H – 102 tonnes (ix) SSRU I – 0 tonnes. |
| Season | 3. For the purpose of the exploratory longline fishery for <i>Dissostichus mawsoni</i> in Statistical Subarea 88.2, the 2021/22 season is defined as the period from 1 December 2021 to 31 August 2022. |

4. The exploratory longline fishery for *Dissostichus mawsoni* in Statistical Subarea 88.2 shall be carried out in accordance with the provisions of Conservation Measure 41-01, except paragraph 6.
- By-catch 5. The by-catch in SSRU H and in each of the research blocks defined in Annex 41-10/A in Statistical Subarea 88.2 in the 2021/22 season shall be regulated as set out in Conservation Measure 33-03.

The by-catch in SSRUs A and B shall be regulated under Conservation Measure 41-09, paragraph 6.
- Mitigation 6. The exploratory longline fishery for *Dissostichus mawsoni* in Statistical Subarea 88.2 shall be carried out in accordance with the provisions of Conservation Measure 25-02.

7. Any vessel catching a total of three (3) seabirds shall immediately change to night setting only (i.e. setting only during the hours of darkness between the times of nautical twilight¹)².
- Observers 8. Each vessel participating in the fishery shall have at least two scientific observers, one of whom shall be an observer appointed in accordance with the CCAMLR Scheme of International Scientific Observation, on board throughout all fishing activities within the fishing period.
- VMS 9. Each vessel participating in this exploratory longline fishery shall be required to operate a VMS at all times, in accordance with Conservation Measure 10-04.
- CDS 10. Each vessel participating in this exploratory longline fishery shall be required to participate in the Catch Documentation Scheme for *Dissostichus* spp., in accordance with Conservation Measure 10-05.
- Research 11. The activities in SSRUs C, D, E, F, G and H will be conducted under the two-year data collection plan³.

12. Each vessel participating in this exploratory fishery shall conduct fishery-based research in accordance with the Research Plan and Tagging Program described in Conservation Measure 41-01, Annex 41-01/B and Annex 41-01/C respectively. The setting of research hauls (Conservation Measure 41-01, Annex 41-01/B, paragraphs 3 and 4) is not required.

13. Toothfish shall be tagged at a rate of at least three fish per tonne green weight caught in SSRU H and at a rate of at least three fish per tonne green weight in each of the research blocks in SSRUs C–G. Tag-overlap statistics shall be calculated separately for SSRU H; and SSRUs C, D, E, F and G combined.

Tagging in SSRUs A and B shall be in accordance with Conservation Measure 41-09, paragraph 13.

- Data: catch/effort
14. For the purpose of implementing this conservation measure in the 2021/22 season, the following shall apply:
- (i) the Daily Catch and Effort Reporting System set out in Conservation Measure 23-07;
 - (ii) the Monthly Fine-scale Catch and Effort Reporting System set out in Conservation Measure 23-04. Fine-scale data shall be submitted on a haul-by-haul basis.
15. For the purpose of Conservation Measures 23-07 and 23-04, the target species is *Dissostichus mawsoni* (any *Dissostichus eleginoides* caught shall be counted towards the overall catch limit for *Dissostichus mawsoni*) and 'by-catch species' are defined as any species other than *Dissostichus* spp.
- Data: biological
16. Fine-scale biological data, as required under Conservation Measure 23-05, shall be collected and recorded. Such data shall be reported in accordance with the CCAMLR Scheme of International Scientific Observation.
- Environ-mental protection
17. Conservation Measure 26-01 applies.
18. Conservation Measures 22-06, 22-07 and 22-08 apply.
- ¹ The exact times of nautical twilight are set forth in the Nautical Almanac tables for the relevant latitude, local time and date. A copy of the algorithm for calculating these times is available from the CCAMLR Secretariat. All times, whether for ship operations or observer reporting, shall be referenced to Coordinated Universal Time (UTC).
- ² Wherever possible, when night setting, setting of lines should be completed at least three hours before sunrise (to reduce loss of bait to/catches of white-chinned petrels).
- ³ As set out in SC-CAMLR-XXXIII, paragraph 3.173 (2014).

Annex 41-10/A

Research blocks

Research block 88.2_1 coordinates

73°48'S	108°00'W
73°48'S	105°00'W
75°00'S	105°00'W
75°00'S	108°00'W

Research block 88.2_2 coordinates

73°18'S	119°00'W
73°18'S	111°30'W
74°12'S	111°30'W
74°12'S	119°00'W

Research block 88.2_3 coordinates

72°12'S	122°00'W
70°50'S	115°00'W
71°42'S	115°00'W
73°12'S	122°00'W

Research block 88.2_4 coordinates

72°36'S	140°00'W
72°36'S	128°00'W
74°42'S	128°00'W
74°42'S	140°00'W.

PRELIMINARY

Conservation Measure 41-11 (2021)

**Limits on the exploratory fishery for *Dissostichus mawsoni*
in Statistical Division 58.4.1 in the 2021/22 season**

Species	toothfish
Area	58.4.1
Season	2021/22
Gear	longline

The Commission hereby adopts the following conservation measure in accordance with Conservation Measure 21-02 and notes that this measure would be for one year and that data arising from these activities would be reviewed by the Scientific Committee:

- | | | | | | | | | | | | | | | | | | | | | | | | |
|----------------------------------|---|----------|----------|----------|----------|----------------------------------|------------|----------------------------------|------------|----------|----------|----------------------------------|------------|----------------------------------|-----------|----------|----------|----------------------------------|-----------|----------------------------------|------------|----------|-----------|
| Access | <p>1. Directed fishing shall not take place in Statistical Division 58.4.1 in 2021/22 for <i>Dissostichus mawsoni</i>.</p> <p>2. This fishery shall be subject to the conditions in Conservation Measure 41-01, Annex 41-01/B.</p> | | | | | | | | | | | | | | | | | | | | | | |
| Catch limit | <p>3. Without prejudice to paragraph 1, a precautionary catch limit of <i>Dissostichus mawsoni</i> in Statistical Division 58.4.1 in the 2021/22 season shall, on the basis of the trend analysis reported by the Scientific Committee, not exceed 583 tonnes as follows:</p> <table border="0" style="margin-left: 40px;"> <tr><td>SSRU A –</td><td>0 tonnes</td></tr> <tr><td>SSRU B –</td><td>0 tonnes</td></tr> <tr><td>SSRU C Research block 58.4.1_1 –</td><td>138 tonnes</td></tr> <tr><td>SSRU C Research block 58.4.1_2 –</td><td>139 tonnes</td></tr> <tr><td>SSRU D –</td><td>0 tonnes</td></tr> <tr><td>SSRU E Research block 58.4.1_3 –</td><td>119 tonnes</td></tr> <tr><td>SSRU E Research block 58.4.1_4 –</td><td>23 tonnes</td></tr> <tr><td>SSRU F –</td><td>0 tonnes</td></tr> <tr><td>SSRU G Research block 58.4.1_5 –</td><td>60 tonnes</td></tr> <tr><td>SSRU G Research block 58.4.1_6 –</td><td>104 tonnes</td></tr> <tr><td>SSRU H –</td><td>0 tonnes.</td></tr> </table> | SSRU A – | 0 tonnes | SSRU B – | 0 tonnes | SSRU C Research block 58.4.1_1 – | 138 tonnes | SSRU C Research block 58.4.1_2 – | 139 tonnes | SSRU D – | 0 tonnes | SSRU E Research block 58.4.1_3 – | 119 tonnes | SSRU E Research block 58.4.1_4 – | 23 tonnes | SSRU F – | 0 tonnes | SSRU G Research block 58.4.1_5 – | 60 tonnes | SSRU G Research block 58.4.1_6 – | 104 tonnes | SSRU H – | 0 tonnes. |
| SSRU A – | 0 tonnes | | | | | | | | | | | | | | | | | | | | | | |
| SSRU B – | 0 tonnes | | | | | | | | | | | | | | | | | | | | | | |
| SSRU C Research block 58.4.1_1 – | 138 tonnes | | | | | | | | | | | | | | | | | | | | | | |
| SSRU C Research block 58.4.1_2 – | 139 tonnes | | | | | | | | | | | | | | | | | | | | | | |
| SSRU D – | 0 tonnes | | | | | | | | | | | | | | | | | | | | | | |
| SSRU E Research block 58.4.1_3 – | 119 tonnes | | | | | | | | | | | | | | | | | | | | | | |
| SSRU E Research block 58.4.1_4 – | 23 tonnes | | | | | | | | | | | | | | | | | | | | | | |
| SSRU F – | 0 tonnes | | | | | | | | | | | | | | | | | | | | | | |
| SSRU G Research block 58.4.1_5 – | 60 tonnes | | | | | | | | | | | | | | | | | | | | | | |
| SSRU G Research block 58.4.1_6 – | 104 tonnes | | | | | | | | | | | | | | | | | | | | | | |
| SSRU H – | 0 tonnes. | | | | | | | | | | | | | | | | | | | | | | |
| Season | <p>4. For the purpose of the exploratory longline fishery for <i>Dissostichus mawsoni</i> in Statistical Division 58.4.1, the 2021/22 season is defined as the period from 1 December 2021 to 30 November 2022.</p> | | | | | | | | | | | | | | | | | | | | | | |
| Fishing operations | <p>5. The exploratory longline fishery for <i>Dissostichus mawsoni</i> in Statistical Division 58.4.1 shall be carried out in accordance with the provisions of Conservation Measure 41-01, except paragraph 6.</p> | | | | | | | | | | | | | | | | | | | | | | |
| By-catch | <p>6. The by-catch in this fishery shall be regulated as set out in Conservation Measure 33-03.</p> | | | | | | | | | | | | | | | | | | | | | | |
| Mitigation | <p>7. The exploratory longline fishery for <i>Dissostichus mawsoni</i> in Statistical Division 58.4.1 shall be carried out in accordance with the provisions of Conservation Measure 25-02.</p> <p>8. Any vessel catching a total of three (3) seabirds shall immediately change to night setting only (i.e. setting only during the hours of darkness between the times of nautical twilight¹)².</p> | | | | | | | | | | | | | | | | | | | | | | |

- | | |
|----------------------------------|---|
| Observers | 9. Each vessel participating in the fishery shall have at least two scientific observers, one of whom shall be an observer appointed in accordance with the CCAMLR Scheme of International Scientific Observation, on board throughout all fishing activities within the fishing period. |
| Research | <p>10. Each vessel participating in this exploratory fishery shall conduct fishery-based research in accordance with the Research Plan and Tagging Program described in Conservation Measure 41-01, Annex 41-01/B and Annex 41-01/C respectively.</p> <p>11. Toothfish shall be tagged at a rate of at least five fish per tonne green weight caught.</p> |
| Data:
catch/effort | <p>12. For the purpose of implementing this conservation measure in the 2021/22 season, the following shall apply:</p> <ul style="list-style-type: none"> (i) the Daily Catch and Effort Reporting System set out in Conservation Measure 23-07; (ii) the Monthly Fine-scale Catch and Effort Reporting System set out in Conservation Measure 23-04. Fine-scale data shall be submitted on a haul-by-haul basis; (iii) fishing vessels undertaking research in accordance with Conservation Measure 24-01 shall report data in accordance with the requirements (i) to (ii) above. <p>13. For the purpose of Conservation Measures 23-07 and 23-04, the target species is <i>Dissostichus mawsoni</i> (any <i>Dissostichus eleginoides</i> caught shall be counted towards the overall catch limit for <i>Dissostichus mawsoni</i>) and 'by-catch species' are defined as any species other than <i>Dissostichus</i> spp.</p> |
| Data:
biological | 14. Fine-scale biological data, as required under Conservation Measure 23-05, shall be collected and recorded. Such data shall be reported in accordance with the CCAMLR Scheme of International Scientific Observation. |
| Environ-
mental
protection | <p>15. Conservation Measure 26-01 applies.</p> <p>16. There shall be no offal³ discharge in this fishery.</p> <p>17. Conservation Measures 22-06, 22-07, 22-08 and 22-09 apply.</p> |
- ¹ The exact times of nautical twilight are set forth in the Nautical Almanac tables for the relevant latitude, local time and date. A copy of the algorithm for calculating these times is available from the CCAMLR Secretariat. All times, whether for ship operations or observer reporting, shall be referenced to Coordinated Universal Time (UTC).
- ² Wherever possible, when night setting, setting of lines should be completed at least three hours before sunrise (to reduce loss of bait to/catches of white-chinned petrels).

- ³ 'Offal' is defined as bait and by-products from the processing of fish and other organisms, including parts or sections of fish or organisms which are by-products of processing.

Annex 41-11/A

Research blocks

Research block 58.4.1_1 coordinates

64°30'S	90°00'E
66°00'S	90°00'E
66°00'S	94°00'E
65°30'S	94°00'E
65°30'S	95°00'E
64°00'S	95°00'E
64°00'S	92°00'E
64°30'S	92°00'E

Research block 58.4.1_2 coordinates

62°30'S	96°00'E
64°00'S	96°00'E
64°00'S	97°00'E
65°00'S	97°00'E
65°00'S	100°00'E
62°30'S	100°00'E

Research block 58.4.1_3 coordinates

64°00'S	112°00'E
66°00'S	112°00'E
66°00'S	115°00'E
64°00'S	115°00'E

Research block 58.4.1_4 coordinates

64°30'S	118°00'E
66°00'S	118°00'E
66°00'S	120°00'E
64°30'S	120°00'E

Research block 58.4.1_5 coordinates

64°30'S	137°00'E
66°00'S	137°00'E
66°00'S	138°00'E
66°30'S	138°00'E
66°30'S	140°00'E
64°30'S	140°00'E

*This is a preliminary version of the conservation measures—
further checking and verification is to be done by the Secretariat*

41-11

Research block 58.4.1_6 coordinates

64°00'S	130°00'E
65°30'S	130°00'E
65°30'S	134°00'E
64°00'S	134°00'E.

PRELIMINARY

Conservation Measure 42-01 (2021)

**Limits on the fishery for *Champsocephalus gunnari*
in Statistical Subarea 48.3 in the 2021/22 and 2022/23 seasons**

Species	icefish
Area	48.3
Season	2021/22, 2022/23
Gear	trawl

The Commission hereby adopts the following conservation measure in accordance with Conservation Measure 31-01:

- | | |
|-------------|---|
| Access | <p>1. The fishery for <i>Champsocephalus gunnari</i> in Statistical Subarea 48.3 shall be conducted by vessels using trawls only. The use of bottom trawls in the directed fishery for <i>Champsocephalus gunnari</i> in Statistical Subarea 48.3 is prohibited.</p> <p>2. Fishing for <i>Champsocephalus gunnari</i> shall be prohibited within 12 n miles of the coast of South Georgia during the period 1 March to 31 May.</p> |
| Catch limit | <p>3. The total catch of <i>Champsocephalus gunnari</i> in Statistical Subarea 48.3 in the 2021/22 season shall be limited to 1 457 tonnes and in the 2022/23 season shall be limited to 1 708 tonnes.</p> <p>4. Where any haul contains more than 100 kg of <i>Champsocephalus gunnari</i>, and more than 10% of <i>Champsocephalus gunnari</i> by number are smaller than 240 mm total length, the fishing vessel shall move to another fishing location at least 5 n miles distant¹. The fishing vessel shall not return to any point within 5 n miles of the location where the catch of small <i>Champsocephalus gunnari</i> exceeded 10% for a period of at least five days². The location where the catch of small <i>Champsocephalus gunnari</i> exceeded 10% is defined as the path followed by the fishing vessel from the point at which the fishing gear was first deployed from the fishing vessel to the point at which the fishing gear was retrieved by the fishing vessel.</p> |
| Season | <p>5. For the purpose of the trawl fishery for <i>Champsocephalus gunnari</i> in Statistical Subarea 48.3, the 2021/22 and 2022/23 seasons are defined as the period from 1 December to 30 November in each season, or until the catch limit is reached, whichever is sooner.</p> |
| By-catch | <p>6. The by-catch in this fishery shall be regulated as set out in Conservation Measure 33-01. If, in the course of the directed fishery for <i>Champsocephalus gunnari</i>, the by-catch in any one haul of any of the species named in Conservation Measure 33-01 is greater than 100 kg and exceeds 5% of the total catch of all fish by weight, or is equal to, or greater than, 2 tonnes, then the fishing vessel shall move to another location at least 5 n miles distant¹. The fishing vessel shall not return to any point within 5 n miles of the location where the by-catch of species named in Conservation Measure 33-01 exceeded 5% for a period of at least five days². The location where the by-catch exceeded 5% is defined as the path followed by the</p> |

fishing vessel from the point at which the fishing gear was first deployed from the fishing vessel to the point at which the fishing gear was retrieved by the fishing vessel.

- | | |
|----------------------------------|---|
| Mitigation | <p>7. The operation of this fishery shall be carried out in accordance with Conservation Measure 25-03 so as to minimise the incidental mortality of seabirds in the course of the fishery. Vessels shall use net binding³ and consider adding weight to the codend to reduce seabird captures during shooting operations.</p> <p>8. Should any vessel catch a total of 20 seabirds in a season, it shall cease fishing and shall be excluded from further participation in the fishery in that season.</p> |
| Observers | <p>9. Each vessel participating in this fishery shall have at least one scientific observer appointed in accordance with the CCAMLR Scheme of International Scientific Observation and, where possible, one additional scientific observer, on board throughout all fishing activities within the fishing period.</p> |
| Data:
catch/effort | <p>10. For the purpose of implementing this conservation measure in the 2021/22 and 2022/23 seasons, the following shall apply:</p> <ul style="list-style-type: none"> (i) the Five-day Catch and Effort Reporting System set out in Conservation Measure 23-01; (ii) the Monthly Fine-scale Catch and Effort Reporting System set out in Conservation Measure 23-04. Fine-scale data shall be submitted on a haul-by-haul basis. <p>11. For the purpose of Conservation Measures 23-01 and 23-04, the target species is <i>Champtocephalus gunnari</i> and 'by-catch species' are defined as any species other than <i>Champtocephalus gunnari</i>.</p> |
| Data:
biological | <p>12. Fine-scale biological data, as required under Conservation Measure 23-05, shall be collected and recorded. Such data shall be reported in accordance with the CCAMLR Scheme of International Scientific Observation.</p> |
| Environ-
mental
protection | <p>13. Conservation Measure 26-01 applies.</p> <ul style="list-style-type: none"> ¹ This provision concerning the minimum distance separating fishing locations is adopted pending the adoption of a more appropriate definition of a fishing location by the Commission. ² The specified period is adopted in accordance with the reporting period specified in Conservation Measure 23-01, pending the adoption of a more appropriate period by the Commission. ³ The following guidelines are provided to assist in the uptake of best-practice mitigation measures: <ul style="list-style-type: none"> (i) When the net is on the deck, prior to shooting, the application of 3-ply sisal string (which typically has a breaking strength of around 110 kg), or a similar organic/biodegradable material, at intervals of 5 m or less prevents the net from |

spreading and lofting at the surface. Net binding should be applied to mesh ranging from 120 to 800 mm. These mesh sizes have been shown to cause the majority of entanglements of white-chinned petrels and black-browed albatrosses, which are the species most vulnerable to this form of mortality in Statistical Subarea 48.3.

- (ii) When applying the 'string', tie an end to the net to prevent the string from slipping down the net and ensure that it can be removed when the net is hauled.
- (iii) Since 2003, weights of 200–1 250 kg have been added to the codend, belly, mouth and groundrope of the net to increase the sink rate and increase the angle of the net's ascent during hauling, thus minimising surface net time. Evidence suggests that this has been effective in reducing bird entanglements during the haul. Vessels are encouraged to further experiment with appropriate net weighting.
- (iv) Net cleaning should be used in conjunction with added weight and net binding to reduce seabird captures during shooting operations.
- (v) Other additional steps should be taken to minimise the time that the net is on the water's surface during shooting and hauling.

Conservation Measure 42-02 (2021)

Limits on the fishery for *Champsocephalus gunnari*

in Statistical Division 58.5.2 in the 2021/22 and 2022/23 seasons

Species	icefish
Area	58.5.2
Season	2021/22, 2022/23
Gear	trawl

Access

1. The fishery for *Champsocephalus gunnari* in Statistical Division 58.5.2 shall be conducted by vessels using trawls only.
2. For the purpose of this fishery for *Champsocephalus gunnari*, the area open to the fishery is defined as that portion of Statistical Division 58.5.2 that lies within the area enclosed by a line:
 - (i) starting at the point where the meridian of longitude 72°15'E intersects the Australia–France Maritime Delimitation Agreement Boundary then south along the meridian to its intersection with the parallel of latitude 53°25'S;
 - (ii) then east along that parallel to its intersection with the meridian of longitude 74°E;
 - (iii) then northeasterly along the geodesic to the intersection of the parallel of latitude 52°40'S and the meridian of longitude 76°E;
 - (iv) then north along the meridian to its intersection with the parallel of latitude 52°S;
 - (v) then northwesterly along the geodesic to the intersection of the parallel of latitude 51°S with the meridian of longitude 74°30'E;
 - (vi) then southwesterly along the geodesic to the point of commencement.
3. A chart illustrating the above definition is appended to this conservation measure (Annex 42-02/A). Areas in Statistical Division 58.5.2 outside that defined above shall be closed to directed fishing for *Champsocephalus gunnari*.

Catch limit

4. The total catch of *Champsocephalus gunnari* in Statistical Division 58.5.2 in the 2021/22 season shall be limited to 1 528 tonnes and 1 138 tonnes in the 2022/23 season.
5. Where any haul contains more than 100 kg of *Champsocephalus gunnari*, and more than 10% of *Champsocephalus gunnari* by number are smaller than the specified minimum legal total length, the fishing vessel shall move to another fishing location at least 5 n miles distant¹. The fishing vessel shall not return to any point within 5 n miles of the location where the catch of small *Champsocephalus gunnari* exceeded 10% for a period of at least five days². The location where the catch of small *Champsocephalus*

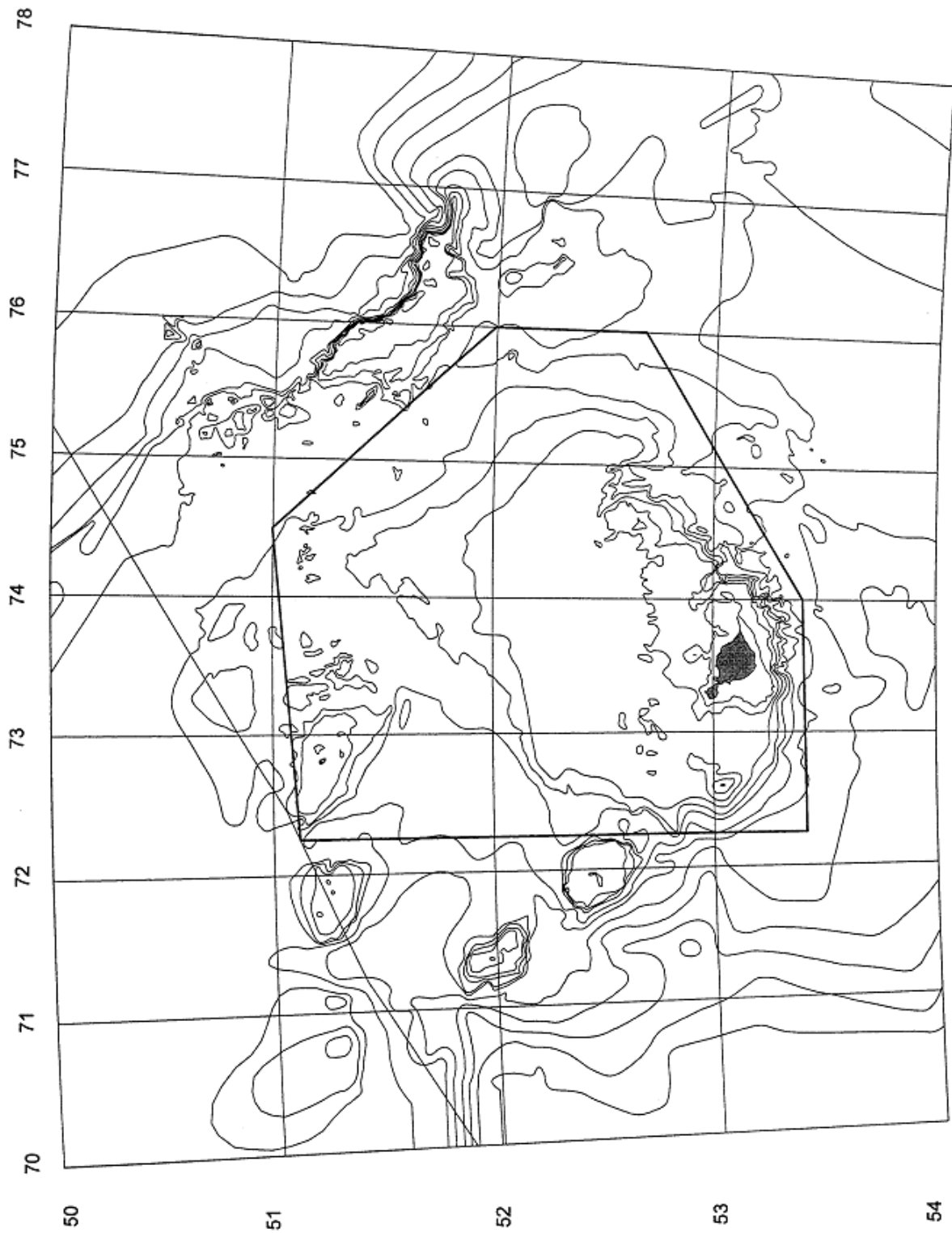
gunnari exceeded 10% is defined as the path followed by the fishing vessel from the point at which the fishing gear was first deployed from the fishing vessel to the point at which the fishing gear was retrieved by the fishing vessel. The minimum legal total length shall be 240 mm.

- | | |
|----------------------------------|---|
| Season | 6. For the purpose of the trawl fishery for <i>Champsocephalus gunnari</i> in Statistical Division 58.5.2, the 2021/22 and 2022/23 seasons are defined as the period from 1 December to 30 November in each season, or until the catch limit is reached, whichever is sooner. |
| By-catch | 7. Fishing shall cease if the by-catch of any species reaches its by-catch limit as set out in Conservation Measure 33-02. |
| Mitigation | 8. The operation of this fishery shall be carried out in accordance with Conservation Measure 25-03 so as to minimise the incidental mortality of seabirds in the course of fishing. |
| Observers | 9. Each vessel participating in this fishery shall have at least one scientific observer, and may include one appointed in accordance with the CCAMLR Scheme of International Scientific Observation, on board throughout all fishing activities within the fishing period. |
| Data:
catch/effort | <p>10. For the purpose of implementing this conservation measure in the 2021/22 and 2022/23 seasons, the following shall apply:</p> <ul style="list-style-type: none"> (i) the Ten-day Catch and Effort Reporting System set out in Annex 42-02/B; (ii) the Monthly Fine-scale Catch and Effort Reporting System set out in Annex 42-02/B. Fine-scale data shall be submitted on a haul-by-haul basis. <p>11. For the purpose of Annex 42-02/B, the target species is <i>Champsocephalus gunnari</i> and 'by-catch species' are defined as any species other than <i>Champsocephalus gunnari</i>.</p> |
| Data:
biological | 12. Fine-scale biological data, as required under Annex 42-02/B, shall be collected and recorded. Such data shall be reported in accordance with the CCAMLR Scheme of International Scientific Observation. |
| Environ-
mental
protection | <p>13. Conservation Measure 26-01 applies.</p> <ul style="list-style-type: none"> ¹ This provision concerning the minimum distance separating fishing locations is adopted pending the adoption of a more appropriate definition of a fishing location by the Commission. ² The specified period is adopted in accordance with the reporting period specified in Conservation Measure 23-01, pending the adoption of a more appropriate period by the Commission. |

*This is a preliminary version of the conservation measures—
further checking and verification is to be done by the Secretariat*

42-02
Annex 42-02/A

Chart of the Heard Island Plateau



Data reporting system

1. A ten-day catch and effort reporting system shall be implemented:
 - (i) for the purpose of implementing this system, the calendar month shall be divided into three reporting periods, viz: day 1 to day 10, day 11 to day 20 and day 21 to the last day of the month. The reporting periods are hereafter referred to as periods A, B and C;
 - (ii) at the end of each reporting period, each Contracting Party participating in the fishery shall obtain from each of its vessels information on total catch and total days and hours fished for that period and shall, by electronic transmission, transmit the aggregated catch and days and hours fished for its vessels so as to reach the Executive Secretary no later than the end of the next reporting period;
 - (iii) a report must be submitted by every Contracting Party taking part in the fishery for each reporting period for the duration of the fishery, even if no catches are taken;
 - (iv) the catch of *Champsocephalus gunnari* and of all by-catch species must be reported;
 - (v) such reports shall specify the month and reporting period (A, B and C) to which each report refers;
 - (vi) immediately after the deadline has passed for receipt of the reports for each period, the Executive Secretary shall notify all Contracting Parties engaged in fishing activities in the division of the total catch taken during the reporting period and the total aggregate catch for the season to date;
 - (vii) at the end of every three reporting periods, the Executive Secretary shall inform all Contracting Parties of the total catch taken during the three most recent reporting periods and the total aggregate catch for the season to date.
2. A fine-scale catch, effort and biological data reporting system shall be implemented:
 - (i) the scientific observer(s) on board each vessel shall collect the data required to complete the CCAMLR fine-scale catch and effort data form C1, latest version. These data shall be submitted to the CCAMLR Secretariat not later than one month after the vessel returns to port;
 - (ii) the catch of *Champsocephalus gunnari* and of all by-catch species must be reported;
 - (iii) the numbers of seabirds and marine mammals of each species caught and released or killed must be reported;
 - (iv) the scientific observer(s) on board each vessel shall collect data on the length composition from representative samples of *Champsocephalus gunnari* and by-catch species:
 - (a) length measurements shall be to the nearest centimetre below;

- (b) representative samples of length composition shall be taken from each fine-scale grid rectangle (0.5° latitude by 1° longitude) fished in each calendar month;
- (v) the above data shall be submitted to the CCAMLR Secretariat not later than one month after the vessel returns to port.

PRELIMINARY

Conservation Measure 51-04 (2021)

**General measure for exploratory fisheries for *Euphausia superba*
in the Convention Area in the 2021/22 season**

Species	krill
Area	various
Season	2021/22
Gear	various

The Commission hereby adopts the following conservation measure:

1. This conservation measure applies to exploratory fisheries for Antarctic krill (*Euphausia superba*), except for such fisheries where the Commission has given specific exemptions, and only to the extent of those exemptions.
2. Fishing in any statistical subarea or division shall cease when the reported catch reaches the specified catch limit¹ and that subarea or division shall be closed to fishing for the remainder of the season. No more than 75% of the catch limit shall be taken within 60 n miles of known breeding colonies of land-based krill-dependent predators.
3. In order to give effect to paragraph 2 above:
 - (i) the precise geographic position of a trawl haul will be determined by the midpoint of the path between the start point and end point of the haul for the purposes of catch and effort reporting;
 - (ii) for the purposes of this conservation measure, fishing is defined as any time that fishing gear, conventional trawls, pumped codends and continuous pumping gear are in the water;
 - (iii) the Secretariat shall notify Contracting Parties participating in these fisheries when the total catch of *Euphausia superba* combined in any statistical subarea or division is likely to reach the specified catch limit, and of the closure of that subarea or division when that limit is reached². No part of a trawl path may lie within a closed subarea or division.
4. The total green weight of krill caught and lost shall be reported.
5. Each vessel participating in the exploratory fisheries for krill during the 2021/22 season shall have one observer appointed in accordance with the CCAMLR Scheme of International Scientific Observation and, where possible, one additional scientific observer, on board throughout all fishing activities within the fishing season.
6. The Data Collection Plan (Annex 51-04/A) and Research Plan (Annex 51-04/B) shall be implemented. Data collected pursuant to the Data Collection and Research Plans for the period up to 1 May 2022 shall be reported to CCAMLR by 1 June 2022 so that the data will be available to the meeting of the Working Group on Ecosystem Monitoring and Management (WG-EMM) in 2022. Such data taken after 1 June 2022 shall be reported to CCAMLR not later than three months after the closure of the fishery, but, where possible, submitted in time for the consideration of the Scientific Committee.
7. Contracting Parties choosing not to participate in the fishery prior to the commencement of the fishery shall inform CCAMLR of changes in their plans no later than one month before the start of the fishery. If, for whatever reason, Contracting Parties are unable to

participate in the fishery, they shall inform CCAMLR no later than one week after finding that they cannot participate. The Secretariat will inform all Contracting Parties immediately after such notification is received.

8. The use of marine mammal exclusion devices on trawls is mandatory.

- ¹ Unless otherwise specified, the catch limit for krill shall be 15 000 tonnes in any statistical subarea or division.
- ² The closure of fisheries is governed by Conservation Measure 31-02.

Annex 51-04/A

Data Collection Plans for exploratory krill fisheries

1. During normal fishing operations, all vessels will comply with the Ten-day Catch and Effort Reporting System (Conservation Measure 23-02) and the Monthly Fine-scale Catch, Effort and Biological Data Reporting Systems (Conservation Measures 23-04 and 23-05), including requirements for the provision of haul-by-haul data.
2. During normal fishing operations, all data specified in the Observer Krill Trawl logbook and [*Scientific Observer's Manual – Krill Fisheries*](#) will be collected.
3. Detailed information on the configuration of every commercial trawl used during normal fishing operations and every research net used during required research operations will be reported to CCAMLR in accordance with Conservation Measure 21-03, Annex 21-03/A, no later than one month after the conclusion of each fishing trip.
4. Data collected from research net hauls shall include:
 - (i) the start and end positions and times of the haul;
 - (ii) the date on which the haul was conducted;
 - (iii) characteristics of the haul such as tow speed, the maximum amount of wire payed out during a tow, the average wire angle during the tow, and calibrated flow-meter values that can be used to provide accurate measures of volume filtered;
 - (iv) an estimate of the total catch (in numbers or weight) of krill; and
 - (v) a random sample of up to 200 krill or the entire catch, whichever is less, to be taken from the haul by the observer – the length, sex and maturity stage should be measured and recorded for all krill according to protocols specified in the Observer Krill Trawl logbook and [*Scientific Observer's Manual – Krill Fisheries*](#).
5. At a minimum, data collected from acoustic transects shall:
 - (i) as far as possible, be recorded following protocols specified for the CCAMLR-2000 Survey;
 - (ii) be linked to position data recorded from a GPS;

- (iii) be continuously recorded and then electronically archived every five days or whenever the vessel moves between exploratory units, whichever occurs most frequently.
- 6. Data collected during research operations conducted by fishing vessels shall be reported to CCAMLR no later than one month after the conclusion of each fishing trip.
- 7. Data collected by Contracting Parties conducting fishery-independent research operations shall, as applicable, be submitted to CCAMLR following guidelines for the submission of CEMP data and data collected during the CCAMLR-2000 Survey. These data shall be submitted in sufficient time to be considered by the next meeting of the Working Group on Ecosystem Monitoring and Management (WG-EMM).

Annex 51-04/B

Research Plans for exploratory krill fisheries

- 1. Activities under this Research Plan shall not be exempted from any conservation measure in force.
- 2. This plan applies to all subareas or divisions.
- 3. A schematic representation of the plans described herein is provided in Figure 1.
- 4. Contracting Parties intending to conduct exploratory krill fisheries shall choose one of the following four Research and Data Collection Plans and advise CCAMLR of their choice at least one month prior to initiating any fishing activities:
 - (i) predator monitoring;
 - (ii) a research survey conducted from a scientific vessel;
 - (iii) acoustic transects by fishing vessels; or
 - (iv) research trawls by fishing vessels.
- 5. Where a Contracting Party's vessel collaborates with a research institute to conduct the research plan, the Contracting Party shall identify the collaborating institute.
- 6. In cases where Contracting Parties select plan (i), predator monitoring, from the list in paragraph 4 above, those Parties shall, as far as possible, follow CEMP Standard Methods. Monitoring shall be conducted for a period of time sufficient both to cover the entire breeding period of land-based predators and to cover the duration of any exploratory fishing that occurs during their breeding season.
- 7. In cases where Contracting Parties select plan (ii), a research survey conducted from a scientific vessel, from the list in paragraph 4 above, Contracting Parties shall, as far as possible, follow all data collection and analysis protocols specified for the CCAMLR-2000 Survey.
- 8. In cases where Contracting Parties select plans (iii), acoustic transects by fishing vessels, or (iv), research trawls by fishing vessels, from the list in paragraph 4 above, vessels

participating in exploratory krill fisheries may carry out the research plan either before (preferred option) or after normal exploratory fishing operations. The research requirements must be completed within a fishing season.

9. For the purposes of this conservation measure, exploratory units are defined as areas of 1° latitude by 1° longitude size, and the vertices of these units shall occur at integer points of latitude and longitude within statistical subareas or divisions.
10. If the vessel undertakes plan (iii), acoustic transects by fishing vessels, or plan (iv), research trawls by fishing vessels, before normal exploratory fishing operations, then the research plan shall be conducted as follows:
 - (i) undertake a research plan for the exploratory units based on the area where it intends to fish;
 - (ii) during normal exploratory fishing operations, vessels can choose to fish in any exploratory unit;
 - (iii) complete additional research operations so that the number of exploratory units in which research operations are conducted by the end of fishing is greater than, or equal to, the catch obtained during normal fishing operations divided by 2 000 tonnes;
 - (iv) carry out its work so that exploratory units in which research operations are conducted surround and include the units where normal fishing operations are conducted.
11. If the vessel undertakes plan (iii), acoustic transects by fishing vessels, or plan (iv), research trawls by fishing vessels, after normal exploratory fishing operations, then the research plan shall be conducted as follows:
 - (i) during normal exploratory fishing operations, vessels can choose to fish in any exploratory unit, however, one set of acoustic transects or one set of research hauls must be conducted in each exploratory unit visited during normal fishing operations;
 - (ii) upon completion (either voluntarily or if the catch limit has been reached) of normal exploratory fishing operations, the vessel will transit to the nearest previously unvisited exploratory unit and begin research operations;
 - (iii) the vessel will determine how many previously unvisited exploratory units must be surveyed during research operations by dividing the catch obtained during normal exploratory fishing operations by 2 000 tonnes and rounding that number to the nearest integer;
 - (iv) the vessel will then select a number of exploratory units equal to the number of units determined by the calculation in item 11(ii) above and conduct one set of acoustic transects or one set of research hauls in each of these units;

- (v) exploratory units visited during research operations must not have been visited during normal exploratory fishing operations;
 - (vi) the survey will be conducted in a way that ensures the exploratory units visited during research operations will surround the units in which normal exploratory fishing operations previously occurred.
12. Research hauls shall be conducted with nekton trawls commonly used in scientific research (e.g. IKMT or RMT type nets) that have 4–5 mm mesh, including the codend. Every research haul shall be a randomly located oblique haul made to a depth of 200 m or 25 m above the bottom (whichever is less) with a duration of 0.5 h. A set of research hauls is defined as three research hauls separated by a minimum of 10 n miles.
13. Acoustic transects shall be conducted using a scientific-quality echosounder collecting information at a minimum frequency of 38 kHz with a minimum observing depth of 200 m. The echosounder should be calibrated prior to the vessel leaving port and, to the extent possible, on the actual fishing ground, and calibration data shall be reported with research transect data. If a vessel is unable to calibrate its echosounder on the fishing grounds:
- (i) acoustic transects comparable with transects visited in previous fishing seasons should be conducted on subsequent visits;
 - (ii) vessels undertaking continuous trawling should attempt to match some acoustic observations with respective trawl catches since they may be able to trawl more or less immediately after acoustic data have been recorded.
- Every acoustic transect shall be a randomly located continuous path travelled at constant speed of 10 knots or less and in a constant direction. The minimum distance between the start and end points of a transect shall be 30 n miles, and a set of acoustic transects is defined as two transects separated by at least 10 n miles.
14. All acoustic transects, both during normal exploratory fishing operations and research operations, shall be accompanied by at least one net haul. These hauls can be conducted either with commercial trawls or with research trawls. Trawls that accompany acoustic transects can be conducted during the transect or immediately after the completion of the transect. In the latter case, the trawl shall be conducted along a previous segment of the transect line. Trawls that accompany acoustic transects shall be at least 0.5 h in duration, or of sufficient time to achieve a representative sample, and the data collected from these hauls shall be the same as those required for research hauls.

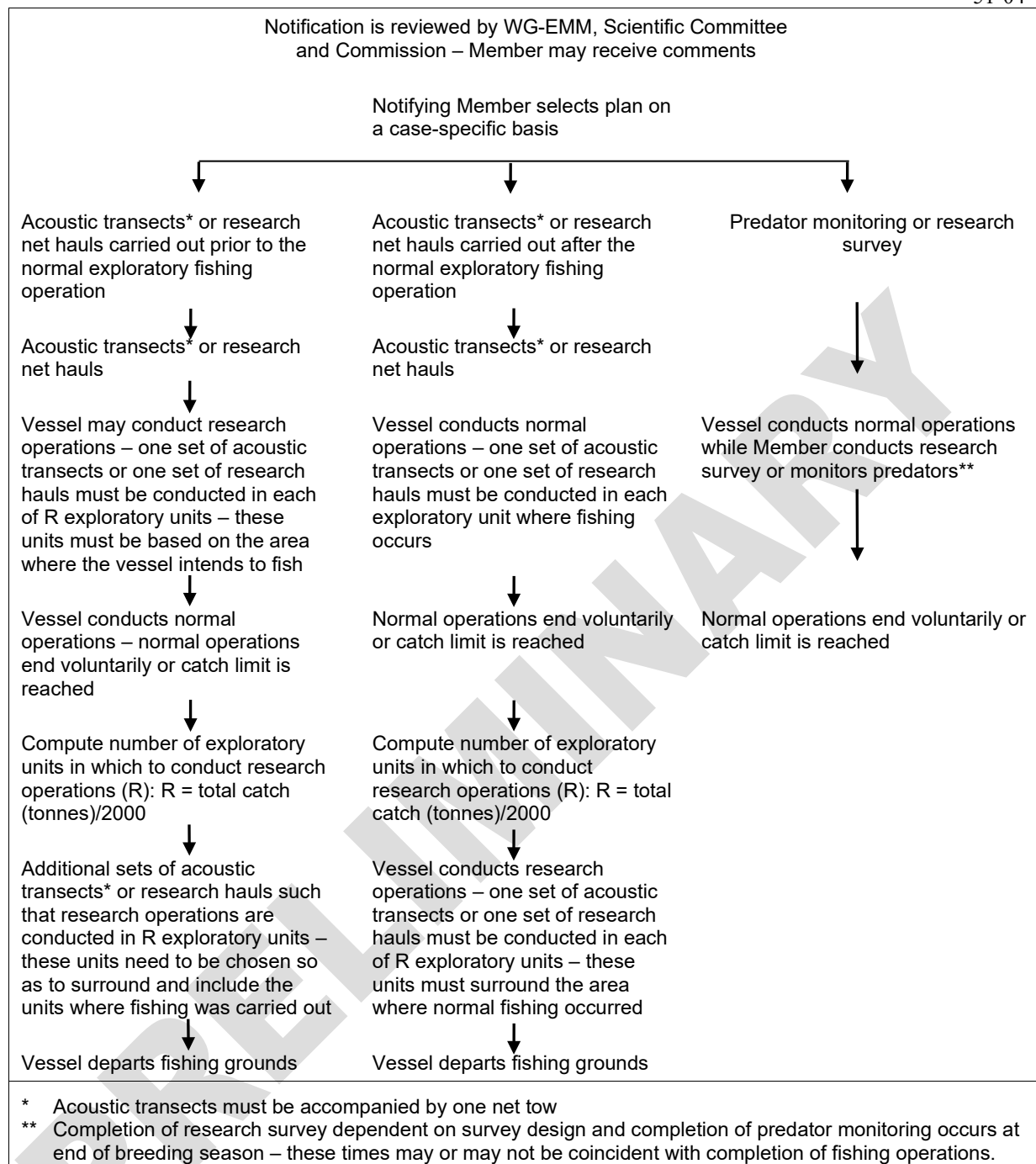


Figure 1: Schematic description of main operations to be conducted during the planning and prosecution of exploratory krill fisheries.

Conservation Measure 51-07 (2021)

**Interim distribution of the trigger level in the fishery for
Euphausia superba in Statistical Subareas 48.1, 48.2, 48.3 and 48.4**

Species	krill
Area	48.1, 48.2, 48.3, 48.4
Season	2021/22
Gear	all

The Commission,

Noting the need to distribute the krill catch in Statistical Area 48 in such a way that predator populations, particularly land-based predators, would not be inadvertently and disproportionately affected by fishing activity,

Recognising that large catches up to the trigger level from areas smaller than subareas should be avoided,

Recognising that the distribution of the trigger level needs to provide for flexibility in the location of fishing in order to (i) allow for interannual variation in the distribution of krill aggregations, and (ii) alleviate the potential for adverse impacts of the fishery in coastal areas on land-based predators,

Understanding that methods such as a quantitative risk assessment framework will provide an initial scientific basis for determining the interim allocation of krill catches and that progress towards feedback management is intended to provide a long-term mechanism to further improve future management of krill, and the spatial allocation of krill catches,

Recognising that further progress with management of krill will require coordinated fishery-dependent and fishery-independent research and monitoring, including for krill-dependent predators,

Recognising that advances are urgently needed as the trigger level itself is not related to the status of the krill stock,

Noting the need for the Scientific Committee to progress toward a functional management system, based on robust science, and that an interim measure is needed to ensure CCAMLR fulfils its obligations under Article II,

hereby adopts the following conservation measure:

1. Pending the review in paragraphs 2 and 3, an interim distribution of the trigger level in paragraph 3 of Conservation Measure 51-01 will be in accordance with the following proportions, where no more than the percentage indicated can be taken from the nominated area:

Statistical Subarea 48.1 – 25%
Statistical Subarea 48.2 – 45%
Statistical Subarea 48.3 – 45%
Statistical Subarea 48.4 – 15%.
2. Advice on the interim distribution of the trigger level in paragraph 1 shall be updated by the Scientific Committee as new scientific evidence becomes available.

3. The Scientific Committee shall provide advice to the Commission regarding progress towards the development of the risk assessment framework, feedback management and the spatial allocation of catch no later than the annual meeting in 2022.
4. If the Scientific Committee so advises, the proportions in paragraph 1 will be revised, with the intent of ensuring the implementation of Article II of the Convention. The Commission shall seek to update or replace this conservation measure, in progressing feedback management, no later than the end of the 2021/22 fishing season, at which time this conservation measure will expire if agreement has not been reached.

PRELIMINARY