



## TAGGING PROTOCOL FOR TOOTHFISH

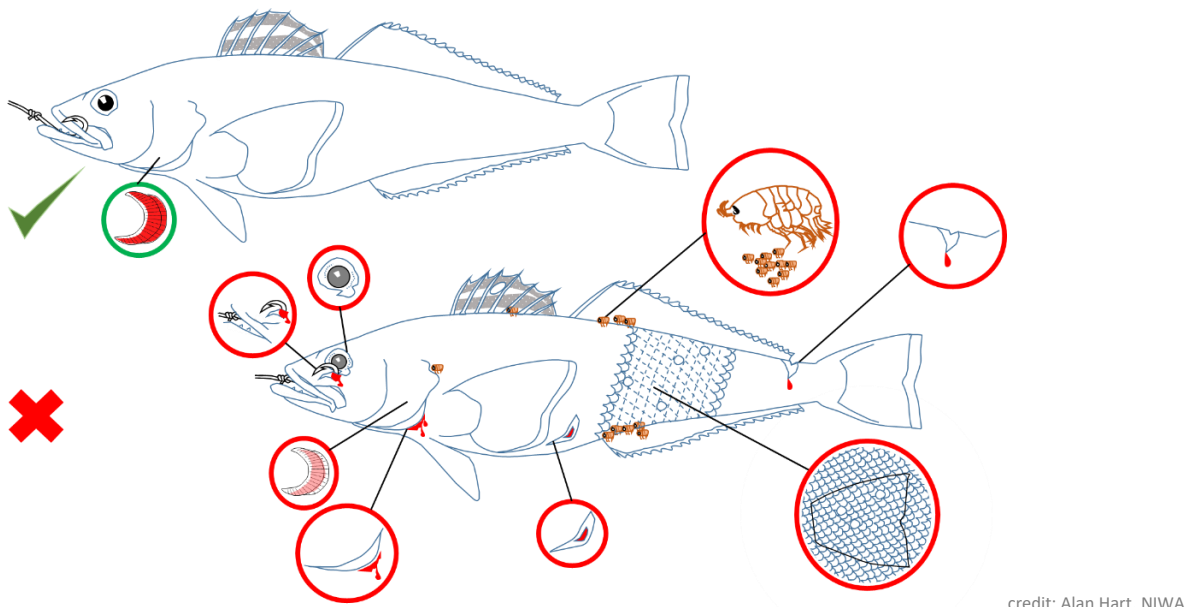
---

1. The Flag State of the vessel is responsible for all tagging procedures and tagging equipment, including sourcing of tags for vessels.
2. Vessels are encouraged to work with observers to ensure that tagging and sampling procedures, specified in this manual are conducted in an efficient manner.
3. Fish that are selected for tagging should be landed on the vessel using a lifting aide that supports the weight of the fish from underneath (e.g. cradle, stretcher, dip net, or sling) to minimise potential injury.
4. Fish that are selected for tagging shall not be lifted using a gaff.
5. Fish that are selected for tagging must be assessed to be in good condition and free from injuries as specified in figure 1.
6. Vessels are encouraged to configure the distance between the hauling bay, the tagging station and the release point to be as short as practicable, and to minimise obstacles that may hinder fish transportation.
7. Fish handling between the hauling bay, tagging station and release point should follow the methods recommended in [www.ccamlr.org/node/85702](http://www.ccamlr.org/node/85702).
8. The tagging station should be protected from the weather, and ensure the safety of the fish handlers and the health of the fish.
9. Fish handling time, from landing to release, is encouraged to be as short as possible.
10. The total time fish are out of any water should be less than three minutes.
11. The time fish are held in a holding tank should be minimised.
12. Any fish tilting sideways or belly up after being held in a holding tank are not suitable for tagging.
13. The design of a holding tank should follow the specifications in section 6.3 of this document. The percentage of fish volume to volume of water in the holding tank should not exceed 10%. Toothfish and skates should be held separately.
14. Tagged toothfish should be released headfirst, ensuring that the distance between the release point and the sea surface is as short as practicable.
15. Tagged skates should be released dorsal side up, ensuring that the distance between the release point and the sea surface is as short as practicable.






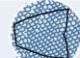
### Toothfish Tagging Procedure and Suitability Assessment

1. Transport fish to the tagging station using the handling procedures outlined in [www.ccamlr.org/node/85702](http://www.ccamlr.org/node/85702).
2. Carefully remove the hook and assess suitability for tagging. Do not tag and release fish if any of the conditions listed Figure 1 are present.
3. Double-tag fish using tags with sequential numbers if possible.
4. Confirm tags are anchored with a gentle tug.
5. Record data as required in observer logbook. Make sure to include all leading characters, tag type, colour and inscription).
6. Check that tag numbers are recorded correctly.

7. Release fish headfirst into water where release conditions are appropriate.
8. Observe and record fate of the tagged fish in the observer logbook.



### Suitability assessment

Assessment category	Do not tag	
Hook injuries		Hook injury outside the mouth area (outside the lips, jaw, or cheek), or in the back of the mouth.
Gills		Gills pink or white
Bleeding		Any visible bleeding from gills, or excessive bleeding elsewhere
Body		Visible damage to fish body with open wounds
Organs		Visible damage to eye or penetration of body cavity, including by crustaceans (amphipods/lice)
Scales		Abrasions or single area of recent scale loss equal to or exceeding the area equivalent to the fish tail

**Figure 1:** Toothfish tagging suitability assessment.

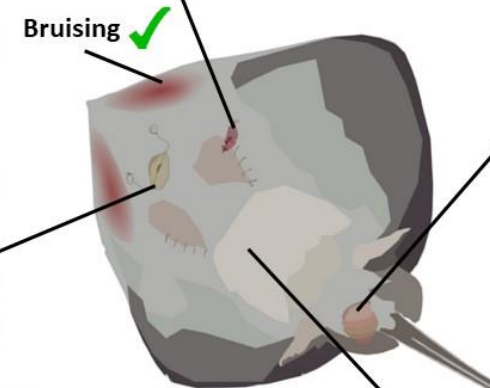
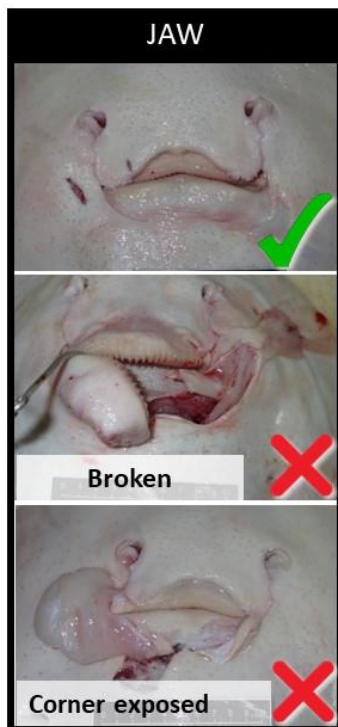


## TAGGING PROTOCOL FOR SKATES

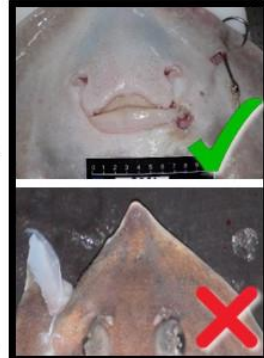
---

1. Transport fish to the tagging station using the handling procedures outlined in [www.ccamlr.org/node/85702](http://www.ccamlr.org/node/85702).
2. Carefully remove the hook and assess suitability for tagging. Do not tag and release fish if any of the retain conditions listed Figure 1 are present.
3. Double-tag the skate using tags with sequential numbers if possible.
4. Confirm that tags are anchored with a gentle tug.
5. Record data as required in the observer logbook. Make sure to include all leading characters, tag type, colour and inscription.
6. Check that tag numbers are recorded correctly.
7. Release skate dorsal side up into water where release conditions are appropriate.
8. Observe and record fate of the skate in the observer logbook.

Ventral side



Skin or muscle damages



Dorsal side

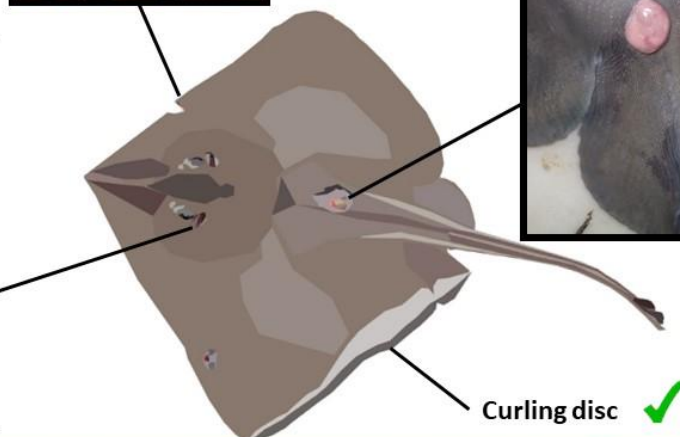
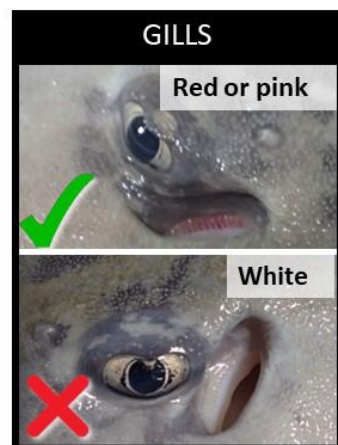


Figure 1: Skate tagging suitability assessment.