

EXPLORATORY FISHERIES – SOUTH OF 60°S

SKATE CONDITION 1 (dead) or 2 (poor health)

RECORD as RETAINED - Do Not DISCARD



skates with severe injuries, which are unlikely to survive or are already dead



Broken jaw bone (1 or 2)



Corner of jaw exposed (1 or 2)



Corner of jaw exposed (1 or 2)



Extensive damage to mouth (soft tissue & jaw bone) (1 or 2)



Large part of intestine visible (1 or 2)



External organs protruding from body cavity (1 or 2)

SKATE CONDITION 3 (average) or 4 (good health)

RECORD as RELEASED

skates that have minor injuries and which have a good chance of survival



No apparent damage (4)



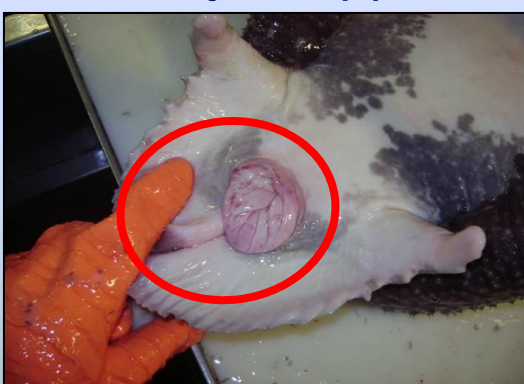
Minor hook damage, no other injuries (4)



More extensive hook damage (3)



Minor damage to skin, not penetrating body cavity (4)



Small part of intestine exposed (3)



Soft tissue damage, corner of jaw bone not exposed (3)

PLEASE RETURN ALL TAGS AND RECORD TAG NUMBERS ACCURATELY